

LEA Name : Exeter Township SD
Address : 200 Elm St
Reading , PA 19606


County : Berks
AUN Number : 114062003
LEA Type : SD

Annual Financial Report
Accuracy Certification Statement
For Fiscal Year Ending
6/30/2017

Pennsylvania Department of Education
&
Office of Comptroller Operations

PDE-2056: Intermediate Unit
PDE-2057: School District, AVTS/CTC, Charter School,
and Special Program Jointure

CERTIFICATION: By signing this page I agree that the electronic data submitted is a complete and accurate statement of the financial operations and status of the local education agency for the fiscal year. It has been prepared in accordance with generally accepted accounting principles and established Commonwealth of PA reporting guidelines.



Chief School Administrator Signature

10 / 30 / 17

Date

Anne C. Hrydiuk

Board Secretary Signature

10 / 30 / 17

Date

Alana Panzer

Contact Person

(610)779-0700 Ext :1025

Contact Person Telephone Number

acpanzer@myexeter.org

Contact Person E-mail Address

(610)779-1085

Contact Person Fax Number

Audit Certification
Annual Financial Report:
For Fiscal Year Ending **6/30/2017**
(Pursuant to PA School Code Section 218(b))

LEA Name : Exeter Township SD
AUN Number : 114062003
County : Berks

Audit Certification Due: 12/31/2017

This certification is applicable to the Annual Financial Report data submitted through the Consolidated Financial Reporting System on: _____
Date

Auditing Firm: Maillie
P. O. Box 680
Oaks, PA 19456

Auditor Contact Name: Chris Herr, CPA
Auditor Phone: 610-935-1420 EXT 235
Auditor E-mail: cherr@maillie.com

CERTIFICATION: By signing this page I agree that the financial statements of the school have been properly audited as noted above pursuant to Article XXIV, and in the auditor's professional opinion, the Annual Financial Report (PDE-2057) submitted on the date referenced is materially consistent with the audited financial statements.

Chief School Administrator

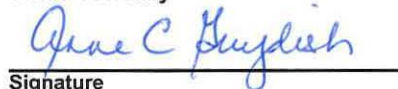


Signature

10/30/17

Date

Board Secretary



Signature

10/30/17

Date

Alana Panzer

Contact Person

acpanzer@myexeter.org

Contact Person E-mail Address

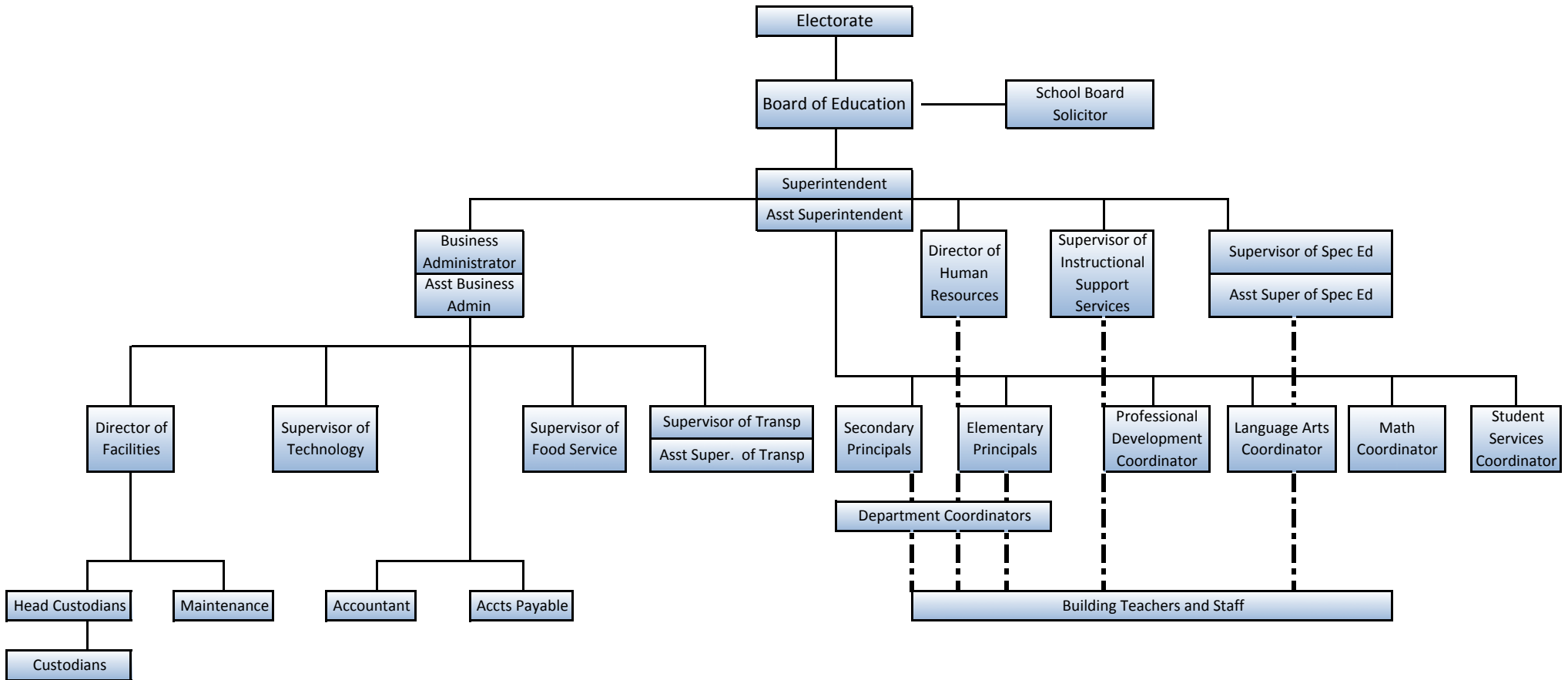
(610)779-0700 Ext :1025

Contact Person Telephone Number

(610)779-1085

Contact Person Fax Number

Exeter Township School District Organizational Chart



<u>Val Number</u>	<u>Description</u>	<u>Justification</u>
30501	Revenue Detail: AFR amount must equal or exceed PDE FAI System amount. 7311, AFR Rev Detail: \$829,336.74 7311, PDE FAI System: \$888,793.78	Transportation Balance Due for 15.16 not received until 08/31/17
30685	Revenue Detail: Current Tax Revenue amount cannot exceed 50% variance from prior year amount. Correct the data or enter a justification. 6153, Current AFR Rev Detail: \$967,555.95 6153, Prior AFR Rev Detail: \$473,129.28	Sale of commercial property in June 2016 and transfer tax received in July 2016
50430	SESS - 2160 Social Work Services: SESS Schedule amounts for Special Education vary from prior year by 40% or more. Correct the data or enter a justification. SESS Schedule 2160: \$0.00 Prior Year SESS Schedule 2160: \$11,074.50	Reduced need for social work services
50450	SESS - 2350 Legal and Accounting Services: SESS Schedule amounts for Special Education vary from prior year by 40% or more. Correct the data or enter a justification. SESS Schedule 2350: \$15,855.00 Prior Year SESS Schedule 2350: \$163,102.75	Less legal fees incurred because of reduced litigation involving special education students.

Amounts Expressed in Whole Dollars	<u>General Fund</u> <u>(10)</u>	<u>Public Purpose Trust</u> <u>(27)</u>	<u>Other Compt Approved</u> <u>(28)</u>	<u>Athletic / Activity</u> <u>(29)</u>	<u>Capital Reserve (690.</u> <u>1850)</u> <u>(31)</u>
Assets And Deferred Outflows Of Resources					
Assets					
0100 Cash and Cash Equivalents	118,086				
0110 Investments	23,755,234				
0120 Taxes Receivable	1,910,448				
0130 Due From Other Funds	91,412				
0141 Due From Other Governments	2,834,543				
0142 State Revenue Receivable					
0143 Federal Revenue Receivable					
0145 Other Intergovernmental Revenue Receivable					
0146 Due from Primary Government					
0147 Due from Component Unit					
0150 Other Receivables	97,490				
0170 Inventories					
0180 Prepaid Expenses (Expenditures)					
0190 Other Current Assets					
Total Assets	\$28,807,213				
0910 Deferred Outflows of Resources					
Total Assets And Deferred Outflows Of Resources	\$28,807,213				

Amounts Expressed in Whole Dollars	<u>Capital Reserve (1431)</u> <u>(32)</u>	<u>Other Capital Projects</u> <u>Fund</u> <u>(39)</u>	<u>Debt Service</u> <u>(40)</u>	<u>Permanent</u> <u>(90)</u>	<u>Total Governmental</u> <u>Funds</u>
Assets And Deferred Outflows Of Resources					
Assets					
0100 Cash and Cash Equivalents					118,086
0110 Investments	4,850,001	3,724,085			32,329,320
0120 Taxes Receivable					1,910,448
0130 Due From Other Funds	1,500,000				1,591,412
0141 Due From Other Governments					2,834,543
0142 State Revenue Receivable					
0143 Federal Revenue Receivable					
0145 Other Intergovernmental Revenue Receivable					
0146 Due from Primary Government					
0147 Due from Component Unit					
0150 Other Receivables	3,984	1,230			102,704
0170 Inventories					
0180 Prepaid Expenses (Expenditures)					
0190 Other Current Assets					
Total Assets	\$6,353,985	\$3,725,315			\$38,886,513
0910 Deferred Outflows of Resources					
Total Assets And Deferred Outflows Of Resources	\$6,353,985	\$3,725,315			\$38,886,513

Amounts Expressed in Whole Dollars	<u>General Fund</u> <u>(10)</u>	<u>Public Purpose Trust</u> <u>(27)</u>	<u>Other Compt Approved</u> <u>(28)</u>	<u>Athletic / Activity</u> <u>(29)</u>	<u>Capital Reserve (690.</u> <u>1850)</u> <u>(31)</u>
Liabilities And Deferred Inflows Of Resources And Fund Balances					
Liabilities					
0400 Due to Other Funds	1,500,000				
0411 Due to Other Governments					
0412 Due to Primary Government					
0413 Due to Component Unit					
0420 Accounts Payable	625,625				
0430 Contracts Payable					
0440 Current Portion of Long-Term Debt					
0450 Short-Term Payables					
0461 Accrued Salaries and Benefits	6,433,700				
0462 Payroll Deductions and Withholding					
0480 Unearned Revenues	8,360				
0490 Other Current Liabilities	32,590				
Total Liabilities	\$8,600,275				
0950 Deferred Inflows of Resources	1,405,955				
Fund Balances					
0810 Nonspendable Fund Balance					
0820 Restricted Fund Balance					
0830 Committed Fund Balance	2,904,460				
0840 Assigned Fund Balance	7,068,701				
0850 Unassigned Fund Balance	8,827,822				
Total Fund Balances	\$18,800,983				
Total Liabilities, Deferred Inflows Of Resources And Fund Balances	\$28,807,213				

Amounts Expressed in Whole Dollars

	<u>Capital Reserve (1431)</u> <u>(32)</u>	<u>Other Capital Projects</u> <u>Fund</u> <u>(39)</u>	<u>Debt Service</u> <u>(40)</u>	<u>Permanent</u> <u>(90)</u>	<u>Total Governmental</u> <u>Funds</u>
Liabilities And Deferred Inflows Of Resources And Fund Balances					
Liabilities					
0400 Due to Other Funds					1,500,000
0411 Due to Other Governments					
0412 Due to Primary Government					
0413 Due to Component Unit					
0420 Accounts Payable					625,625
0430 Contracts Payable					
0440 Current Portion of Long-Term Debt					
0450 Short-Term Payables					
0461 Accrued Salaries and Benefits					6,433,700
0462 Payroll Deductions and Withholding					
0480 Unearned Revenues					8,360
0490 Other Current Liabilities					32,590
Total Liabilities					\$8,600,275
0950 Deferred Inflows of Resources					1,405,955
Fund Balances					
0810 Nonspendable Fund Balance					
0820 Restricted Fund Balance		3,725,315			3,725,315
0830 Committed Fund Balance					2,904,460
0840 Assigned Fund Balance	6,353,985				13,422,686
0850 Unassigned Fund Balance					8,827,822
Total Fund Balances	\$6,353,985	\$3,725,315			\$28,880,283
Total Liabilities, Deferred Inflows Of Resources And Fund Balances	\$6,353,985	\$3,725,315			\$38,886,513

Amounts Expressed in Whole Dollars	<u>General Fund</u> <u>(10)</u>	<u>Public Purpose Trust</u> <u>(27)</u>	<u>Other Compt Approved</u> <u>(28)</u>	<u>Athletic / Activity</u> <u>(29)</u>	<u>Capital Reserve (690.</u> <u>1850)</u> <u>(31)</u>
Revenues					
6000 Revenue from Local Sources	49,988,345				
7000 Revenue from State Sources	21,189,850				
8000 Revenue from Federal Sources	730,785				
Total Revenues	\$71,908,980				
Expenditures					
1000 Instruction	40,379,143				
2000 Support Services	18,384,299				
3000 Operation of Non-Instructional Services	1,465,144				
4000 Facilities Acquisition, Construction and Improvement Services	125,467				
5110 Debt Service	8,796,359				
5130 Refund of Prior Year Revenues / Receipts	286,045				
Total Expenditures	\$69,436,457				
Excess (Deficiency) Of Revenues Over Expenditures	\$2,472,523				
Other Financing Sources (Uses)					
9110 Face Value of Bonds Issued					
9120 Proceeds from Refunding of Bonds					
9130 Bond Premiums					
9200 Proceeds from Extended-Term Financing	352,276				
9300 Interfund Transfers - IN					
9400 Sale of or Compensation for Loss of Fixed Assets	21,868				
9710 Transfers from Component Units					
9720 Transfers from Primary Governments					
9910 Other Financing Sources Not Listed in the 9000 Series					
9990 Insurance Recoveries	1,501				
5120 Debt Service – Refunded Bonds					
5150 Bond Discounts					
5200 Interfund Transfers – Out	1,501,761				
5300 Transfers Out to Component Units/Primary Governments					
Total Other Financing Sources (Uses)	(\$1,126,116)				

Amounts Expressed in Whole Dollars	<u>Capital Reserve (1431)</u> <u>(32)</u>	<u>Other Capital Projects</u> <u>Fund</u> <u>(39)</u>	<u>Debt Service</u> <u>(40)</u>	<u>Permanent</u> <u>(90)</u>	<u>Total Governmental</u> <u>Funds</u>
Revenues					
6000 Revenue from Local Sources	28,931	23,451			50,040,727
7000 Revenue from State Sources					21,189,850
8000 Revenue from Federal Sources					730,785
Total Revenues	\$28,931	\$23,451			\$71,961,362
Expenditures					
1000 Instruction					40,379,143
2000 Support Services					18,384,299
3000 Operation of Non-Instructional Services					1,465,144
4000 Facilities Acquisition, Construction and Improvement Services	270,892				396,359
5110 Debt Service					8,796,359
5130 Refund of Prior Year Revenues / Receipts					286,045
Total Expenditures	\$270,892				\$69,707,349
Excess (Deficiency) Of Revenues Over Expenditures	(\$241,961)	\$23,451			\$2,254,013
Other Financing Sources (Uses)					
9110 Face Value of Bonds Issued					
9120 Proceeds from Refunding of Bonds					
9130 Bond Premiums					
9200 Proceeds from Extended-Term Financing					352,276
9300 Interfund Transfers - IN	1,500,000				1,500,000
9400 Sale of or Compensation for Loss of Fixed Assets					21,868
9710 Transfers from Component Units					
9720 Transfers from Primary Governments					
9910 Other Financing Sources Not Listed in the 9000 Series					
9990 Insurance Recoveries					1,501
5120 Debt Service – Refunded Bonds					
5150 Bond Discounts					
5200 Interfund Transfers – Out					1,501,761
5300 Transfers Out to Component Units/Primary Governments					
Total Other Financing Sources (Uses)	\$1,500,000				\$373,884

Amounts Expressed in Whole Dollars	<u>General Fund</u> <u>(10)</u>	<u>Public Purpose Trust</u> <u>(27)</u>	<u>Other Compt Approved</u> <u>(28)</u>	<u>Athletic / Activity</u> <u>(29)</u>	<u>Capital Reserve</u> <u>(690.</u> <u>1850)</u> <u>(31)</u>
Special And Extraordinary Items					
9920 Special Items – Gains					
9930 Extraordinary Items – Gains					
5520 Special Items – Losses					
5530 Extraordinary Items – Losses					
Net Change In Fund Balances	\$1,346,407				
Fund Balance					
0001 Fund Balance - Beginning of Fiscal Year	17,454,573				
Fund Balance - End Of Year	\$18,800,980				

Amounts Expressed in Whole Dollars	<u>Capital Reserve (1431)</u> <u>(32)</u>	<u>Other Capital Projects</u> <u>Fund</u> <u>(39)</u>	<u>Debt Service</u> <u>(40)</u>	<u>Permanent</u> <u>(90)</u>	<u>Total Governmental</u> <u>Funds</u>
Special And Extraordinary Items					
9920 Special Items – Gains					
9930 Extraordinary Items – Gains					
5520 Special Items – Losses					
5530 Extraordinary Items – Losses					
Net Change In Fund Balances	\$1,258,039	\$23,451			\$2,627,897
Fund Balance					
0001 Fund Balance - Beginning of Fiscal Year	5,095,946	3,701,864			26,252,383
Fund Balance - End Of Year	\$6,353,985	\$3,725,315			\$28,880,280

Amounts Expressed in Whole Dollars	<u>Food Service</u> <u>(51)</u>	<u>Child Care</u> <u>Operations</u> <u>(52)</u>	<u>Other Enterprise</u> <u>(58)</u>	<u>TOTAL</u>	<u>Internal Service</u> <u>(60)</u>
Assets And Deferred Outflows Of Resources					
Current Assets					
0100 Cash and Cash Equivalents	143,826			143,826	
0110 Investments	500,000			500,000	
0130 Due From Other Funds					
0141 Due From Other Governments	13,011			13,011	
0142 State Revenue Receivable					
0143 Federal Revenue Receivable					
0146 Due from Primary Government					
0147 Due from Component Unit					
0150 Other Receivables	2,209			2,209	
0170 Inventories	44,761			44,761	
0180 Prepaid Expenses (Expenditures)					
0190 Other Current Assets					
Total Current Assets	\$703,807			\$703,807	
Noncurrent Assets					
0211 Land					
0212 Site Improvements (Net)					
0220 Buildings and Building Improvements (Net)					
0230 Machinery, Equipment and Furniture (Net)	123,015			123,015	
0250 Construction in Progress					
0260 Long Term Prepayments					
0290 Other Noncurrent Assets					
Total Noncurrent Assets	\$123,015			\$123,015	
0910 Deferred Outflows of Resources	575,000			575,000	
Total Assets And Deferred Outflows Of Resources	\$1,401,822			\$1,401,822	

Amounts Expressed in Whole Dollars	<u>Food Service</u> <u>(51)</u>	<u>Child Care</u> <u>Operations</u> <u>(52)</u>	<u>Other Enterprise</u> <u>(58)</u>	<u>TOTAL</u>	<u>Internal Service</u> <u>(60)</u>
Liabilities And Deferred Inflows Of Resources And Net Position					
Current Liabilities					
0400 Due to Other Funds	91,412			91,412	
0411 Due to Other Governments					
0413 Due to Component Unit					
0420 Accounts Payable	3,940			3,940	
0430 Contracts Payable					
0440 Current Portion of Long-Term Debt					
0450 Short-Term Payables					
0461 Accrued Salaries and Benefits	133,738			133,738	
0462 Payroll Deductions and Withholding					
0480 Unearned Revenues	38,130			38,130	
0490 Other Current Liabilities					
Total Current Liabilities	\$267,220			\$267,220	
Noncurrent Liabilities					
0510 Bonds Payable					
0520 Extended-Term Financing Agreements Payable					
0530 Lease-Purchase Obligations					
0540 Accumulated Compensated Absences					
0550 Authority Lease Obligations					
0560 Other Post-Employment Benefits (OPEB)					
0570 Net Pension Liability					
0599 Other Noncurrent Liabilities	2,515,000			2,515,000	
Total Noncurrent Liabilities	\$2,515,000			\$2,515,000	
Total Liabilities	\$2,782,220			\$2,782,220	
0950 Deferred Inflows of Resources	126,000			126,000	
Net Position					
0791 Net Investment in Capital Assets	123,015			123,015	
0008 Restricted Net Position (0792 – 0798)					
0799 Unrestricted Net Position	(1,629,413)			(1,629,413)	
Total Net Position	(\$1,506,398)			(\$1,506,398)	
Total Liabilities And Deferred Inflows Of Resources And Net Position	\$1,401,822			\$1,401,822	

Amounts Expressed in Whole Dollars	<u>Food Service</u> <u>(51)</u>	<u>Child Care Operations</u> <u>(52)</u>	<u>Other Enterprise</u> <u>(58)</u>	<u>TOTAL</u>	<u>Internal Service</u> <u>(60)</u>
Operating Revenues					
6600 Food Service Revenue	799,866			799,866	
0071 Charges for Services					
0072 Other Operating Revenue					
Total Operating Revenues	\$799,866			\$799,866	
Operating Expenses					
100 Personnel Services – Salaries	675,131			675,131	
200 Personnel Services – Employee Benefits	444,452			444,452	
300 Purchased Professional and Technical Services					
400 Purchased Property Services	46,357			46,357	
500 Other Purchased Services	2,988			2,988	
600 Supplies	677,369			677,369	
740 Depreciation	18,085			18,085	
810 Dues and Fees	6,127			6,127	
890 Miscellaneous Expenditures					
Total Operating Expenses	\$1,870,509			\$1,870,509	
Operating Income (Loss)	(\$1,070,643)			(\$1,070,643)	
Non Operating Revenues (Expenses)					
6500 Earnings on Investments	4,255			4,255	
6920 Contributions and Donations from Private Sources					
6930 Gains or Losses on Sale of Fixed Assets					
6991 Refunds of a Prior Year Expenditure					
7000 Revenue from State Sources	174,888			174,888	
8000 Revenue from Federal Sources	641,617			641,617	
820 Claims and Judgments Against the LEA					
830 Interest					
TOTAL Non Operating Revenues (Expenses)	\$820,760			\$820,760	
Income (Loss) Before Contributions And Transfers	(\$249,883)			(\$249,883)	

Amounts Expressed in Whole Dollars	<u>Food Service</u> <u>(51)</u>	<u>Child Care Operations</u> <u>(52)</u>	<u>Other Enterprise</u> <u>(58)</u>	<u>TOTAL</u>	<u>Internal Service</u> <u>(60)</u>
Contributions, Transfers, and Special and Extraordinary Items					
5200 Interfund Transfers – Out					
5300 Transfers Out to Component Units/Primary Governments					
5520 Special Items – Losses					
5530 Extraordinary Items – Losses					
9300 Interfund Transfers - IN	1,761			1,761	
9500 Capital Contributions					
9700 Transfers IN From Component Units/Primary Governments					
9920 Special Items – Gains					
9930 Extraordinary Items – Gains					
Change In Net Position	(\$248,122)			(\$248,122)	
0002 Net Position - Beginning of Fiscal Year	(1,258,276)			(1,258,276)	
0003 Accounting Changes / Residual Equity Transfers					
Net Position - End Of Year	(\$1,506,398)			(\$1,506,398)	

Amounts Expressed in Whole Dollars	<u>Food Service</u> <u>(51)</u>	<u>Child Care Operations</u> <u>(52)</u>	<u>Other Enterprise</u> <u>(58)</u>	<u>TOTAL</u>	<u>Internal Service(60)</u>
Cash Flows From Operating Activities					
0011 Cash Receipts From Users	791,236			791,236	
0012 Cash Receipts From Assessments Made to Other Funds					
0013 Cash Receipts From Earnings on Investments					
0014 Cash Receipts From Other Operating Revenue					
0015 Cash Payments To Employees For Services	1,059,674			1,059,674	
0016 Cash Payments For Insurance Claims					
0017 Cash Payments To Suppliers For Goods and Services	618,901			618,901	
0018 Cash Payments For Other Operating Expenses					
Net Cash Provided By (Used For) Operating Activities	(\$887,339)			(\$887,339)	
Cash Flows From Non-Capital Financing Activities					
0021 Receipts From Local Sources - 6000	1,761			1,761	
0022 Receipts From State Sources - 7000	174,974			174,974	
0023 Receipts From Federal Sources -8000	554,579			554,579	
0024 Notes and Loans Received (Repaid)					
0025 Interest Paid on Notes/Loans - 5100-830					
0026 Operating Transfers In (Out)/Residual Equity Trans					
0027 Operating Transfers In (Out) Primary Government / Comp Unit					
0028 Receipts From Refund of Prior Year Expenditures - 6991					
0029 Special and Extraordinary Gains (losses)					
Net Cash Prov By (Used for) Non-Capital Financing Activities	\$731,314			\$731,314	
Cash Flows From Capital and Related Financing Activities					
0031 Payments For Fac Acq, Const, and Imp - 4000					
0032 Gain / (Loss) on Sale of Fixed Assets - 6930					
0033 Proceeds From Extended Term Financing - 9200					
0034 Principal Paid on Financing Agreements					
0035 Interest Paid on Financing Agreements - 5100-830					
0036 (Inc) Dec in Contributed Capital					
Net Cash Prov By (Used for) Capital and Related Financing Activities					
Cash Flows From Investing Activities					
0041 Earnings on Investments - 6500	4,255			4,255	
0042 Purchase of Inv Securities / Deposits to Inv Pools	100,000			100,000	
0043 Receipts From Investment Pool Withdrawals					
0044 Proceeds from Sale and Maturity of Inv Securities					
0045 Loans Received (Paid)					
Net Cash Prov By (Used for) Investing Activities	\$104,255			\$104,255	

	<u>Food Service</u> <u>(51)</u>	<u>Child Care Operations</u> <u>(52)</u>	<u>Other Enterprise</u> <u>(58)</u>	<u>TOTAL</u>	<u>Internal Service</u> <u>(60)</u>
Net Increase (Decrease) in Cash Flows	(51,770)			(51,770)	
0004 Cash and Cash Equivalents Beginning of Year	195,596			195,596	
Cash and Cash Equivalents at Year End	\$143,826			\$143,826	

Reconciliation of Operating Income (Loss) To Net Cash Provided by (Used For) Operating Activities

0005 Operating Income (Loss) per REP	(1,070,643)			(1,070,643)	
Adjustments					
0051 Depreciation and Net Amortization	18,085			18,085	
0052 Provision for Uncollectible Accounts					
0053 Other Adjustments	87,958			87,958	
Effect of Changes in Assets, Liabilities, Deferred Outflows and Deferred Inflows					
0054 (Inc) Dec In Accounts Receivable (0120-0150)	(1,436)			(1,436)	
0055 Advances to Other Funds (0160)	(4,833)			(4,833)	
0056 (Inc) Dec in Inventories (0170)	28,735			28,735	
0057 (Inc) Dec in Prepaid Expenses (0180)					
0058 (Inc) Dec in Other Current or Noncurrent Assets					
0064 Deferred Outflows (0910)					
0059 Inc (Dec) in Accounts Payable (0400-0450)	2,080			2,080	
0060 Inc (Dec) in Accrued Salaries/Benefits (0461)	(1,091)			(1,091)	
0065 Inc (Dec) in Net Pension Liabilities (0570)					
0066 Inc (Dec) in Other Postemp Benefit Oblig (0560)					
0061 Inc (Dec) in Payroll Deductions/Withholding (0462)					
0062 Inc (Dec) in Unearned Revenue (0480)	(7,194)			(7,194)	
0063 Inc (Dec) in Other Current or Noncurrent Liabilities	61,000			61,000	
0067 Deferred Inflows (0950)					
Total Adjustments	\$183,304			\$183,304	
Cash Provided By (Used for) Total	(\$887,339)			(\$887,339)	

COMBINED STATEMENT OF CASH FLOWS
SCHEDULE OF NONCASH INVESTING, CAPITAL, AND FINANCING ACTIVITIES

Explanation of Transaction and Balance Sheet Effect	Amount
Total	

LEA : 114062003 Exeter Township SD

Printed 12/1/2017 12:42:10 PM

Amounts Expressed in Whole Dollars

	<u>Private Purpose Trust</u> (71)	<u>Investment Trust</u> (72)	<u>Pension Trust</u> (73)	<u>Activity</u> (81)
Assets And Deferred Outflows Of Resources				
Assets				
0100 Cash and Cash Equivalents	28,578			141,564
0110 Investments	28,375			
0130 Due From Other Funds				
0147 Due from Component Unit				
0150 Other Receivables				
0170 Inventories				
0180 Prepaid Expenses (Expenditures)				
0190 Other Current Assets				
0220 Buildings and Building Improvements (Net)				
0230 Machinery, Equipment and Furniture (Net)				
Total Assets	\$56,953			\$141,564
0910 Deferred Outflows of Resources				
Total Assets And Deferred Outflows Of Resources	\$56,953			\$141,564

LEA : 114062003 Exeter Township SD

Printed 12/1/2017 12:42:10 PM

Amounts Expressed in Whole Dollars	<u>Other Agency</u> <u>(89)</u>	<u>Discrete Component Units</u> <u>(98)</u>	<u>Discrete Component Units</u> <u>(99)</u>	<u>Total Fiduciary Funds</u>
Assets And Deferred Outflows Of Resources				
Assets				
0100 Cash and Cash Equivalents				170,142
0110 Investments				28,375
0130 Due From Other Funds				
0147 Due from Component Unit				
0150 Other Receivables				
0170 Inventories				
0180 Prepaid Expenses (Expenditures)				
0190 Other Current Assets				
0220 Buildings and Building Improvements (Net)				
0230 Machinery, Equipment and Furniture (Net)				
Total Assets				\$198,517
0910 Deferred Outflows of Resources				
Total Assets And Deferred Outflows Of Resources				\$198,517

LEA : 114062003 Exeter Township SD

Printed 12/1/2017 12:42:10 PM

Amounts Expressed in Whole Dollars	<u>Private Purpose Trust</u> (71)	<u>Investment Trust</u> (72)	<u>Pension Trust</u> (73)	<u>Activity</u> (81)
Liabilities, Deferred Inflows Of Resources And Net Position				
Liabilities				
0400 Due to Other Funds				
0411 Due to Other Governments				
0412 Due to Primary Government				
0413 Due to Component Unit				
0420 Accounts Payable				141,564
0430 Contracts Payable				
0450 Short-Term Payables				
0461 Accrued Salaries and Benefits				
0462 Payroll Deductions and Withholding				
0480 Unearned Revenues				
0490 Other Current Liabilities				
Total Liabilities				\$141,564
0950 Deferred Inflows of Resources				
Net Position				
0791 Net Investment in Capital Assets				
0009 Restricted Net Position (0792 – 0798)				
0799 Unrestricted Net Position		56,953		
Total Net Position		\$56,953		
Total Liabilities, Deferred Inflows Of Resources And Net Position		\$56,953		\$141,564

LEA : 114062003 Exeter Township SD

Printed 12/1/2017 12:42:10 PM

Amounts Expressed in Whole Dollars

<u>Other Agency</u>	<u>Discrete Component Units</u>	<u>Discrete Component Units</u>	<u>Total Fiduciary Funds</u>
(89)	(98)	(99)	

Liabilities, Deferred Inflows Of Resources And Net Position

Liabilities

0400 Due to Other Funds			
0411 Due to Other Governments			
0412 Due to Primary Government			
0413 Due to Component Unit			
0420 Accounts Payable			141,564
0430 Contracts Payable			
0450 Short-Term Payables			
0461 Accrued Salaries and Benefits			
0462 Payroll Deductions and Withholding			
0480 Unearned Revenues			
0490 Other Current Liabilities			

Total Liabilities			\$141,564
--------------------------	--	--	------------------

0950 Deferred Inflows of Resources

Net Position

0791 Net Investment in Capital Assets			
0009 Restricted Net Position (0792 – 0798)			
0799 Unrestricted Net Position			56,953

Total Net Position			\$56,953
---------------------------	--	--	-----------------

Total Liabilities, Deferred Inflows Of Resources And Net Position			\$198,517
--	--	--	------------------

Amounts Expressed in Whole Dollars	<u>Private Purpose Trust</u> (71)	<u>Investment Trust</u> (72)	<u>Pension Trust</u> (73)	<u>Discrete Component</u> <u>Units</u> (98)	<u>Discrete Component</u> <u>Units</u> (99)	<u>Total Fiduciary</u> <u>Funds</u>
Additions						
0091 Gifts and Contributions	4,500					4,500
0092 Other Additions	39					39
Deductions						
0093 Scholarships Awarded	7,250					7,250
0094 Other Deductions						
Change In Net Position	(\$2,711)					(\$2,711)
0006 Net Position – Beginning of Fiscal Year	59,664					59,664
0007 Net Position Held in Trust for Pension Benefits						
Net Position - End of Fiscal Year	\$56,953					\$56,953

	<u>Revenue Reported In Current Year</u>	<u>Current Year Tax Accrual</u>	<u>Prior Year Tax Accrual</u>	<u>Taxes Collected In Current Year</u>
<u>Revenue from Local Sources</u>				
6111 Current Real Estate Taxes	42,028,048.67			42,028,048.67
6112 Interim Real Estate Taxes	131,685.64			131,685.64
6113 Public Utility Realty Taxes	52,351.08			52,351.08
6120 Current Per Capita Taxes, Section 679	69,321.90			69,321.90
6141 Current Act 511 Per Capita Taxes	69,321.90			69,321.90
6143 Current Act 511 Local Services Taxes	88,089.31			88,089.31
6151 Current Act 511 Earned Income Taxes	3,867,623.66	327,856.51	274,089.70	3,813,856.85
6153 Current Act 511 Real Estate Transfer Taxes	554,298.13	47,836.39	461,094.21	967,555.95
6157 Current Act 511 Mercantile Taxes	591,444.66			591,444.66
6411 Delinquent Real Estate Taxes	1,267,210.14	109,313.84	89,394.80	1,247,291.10
6420 Delinquent Per Capita Taxes, Section 679	4,085.75	187.20	211.62	4,110.17
6440 Delinquent Local Enabling Taxes - Flat Rate Assessments	4,085.75	187.20	211.63	4,110.18
6500 Earnings on Investments	207,525.36			
6700 Revenues from LEA Activities	189,148.84			
6831 Federal Revenue Received from Other Pennsylvania Public LEAs	3,765.00			
6832 Federal IDEA Revenue Received as Pass Through	665,079.25			
6910 Rentals	81,913.75			
6920 Contributions and Donations from Private Sources	21,589.95			
6941 Regular Day School Tuition	3,330.00			
6944 Receipts from Other LEAs in Pennsylvania - Education	66,036.00			
6991 Refunds of a Prior Year Expenditure	4,344.71			
6999 Other Revenues Not Specified Above	18,045.27			
TOTAL Revenue from Local Sources	\$49,988,344.72	\$485,381.14	\$825,001.96	\$49,067,187.41

**Revenue Reported
In Current Year**

Revenue from State Sources

7110 Basic Education Funding	8,604,072.99		
7160 Tuition for Orphans Subsidy	84,862.64		
7271 Special Education funds for School-Aged Pupils	1,980,952.57		
7311 Pupil Transportation Subsidy	829,336.74		
7312 Nonpublic and Charter School Pupil Transportation Subsidy	150,150.00		
7320 Rental and Sinking Fund Payments / Building Reimbursement Subsidy	1,437,912.10		
7330 Health Services (Medical, Dental, Nurse, Act 25)	75,835.78		
7340 State Property Tax Reduction Allocation	1,362,510.40		
7505 Ready to Learn Block Grant	542,921.00		
7810 State Share of Social Security and Medicare Taxes	1,260,659.87		
7820 State Share of Retirement Contributions	4,860,635.51		
TOTAL Revenue from State Sources	\$21,189,849.60		

**Revenue Reported
In Current Year**

Revenue from Federal Sources

8514 NCLB, Title I - Improving the Academic Achievement of the Disadvantaged	463,108.65			
8515 NCLB, Title II - Preparing, Training and Recruiting High Quality Teachers and Principals	34,112.28			
8516 NCLB, Title III - Language Instruction for Limited English Proficient and Immigrant Students	803.69			
8690 Other Restricted Federal Grants-in-Aid Through the Commonwealth of PA	7,252.50			
8810 School-Based Access Medicaid Reimbursement Program (SBAP) Reimbursements (Access)	222,668.00			
8820 Medical Assistance Reimbursement for Administrative Claiming (Quarterly) Program	2,839.74			
TOTAL Revenue from Federal Sources	\$730,784.86			

	Revenue Reported In Current Year			
<u>Other Financing Sources</u>				
9290 Other Extended-Term Financing Proceeds	352,276.20			
9400 Sale of or Compensation for Loss of Fixed Assets	21,868.33			
9990 Insurance Recoveries	1,500.70			
TOTAL Other Financing Sources	\$375,645.23			
TOTAL FROM ALL SOURCES	\$72,284,624.41	\$485,381.14	\$825,001.96	\$49,067,187.41

Revenue from Local Sources	49,988,344.72
Revenue from State Sources	21,189,849.60
Revenue from Federal Sources	730,784.86
Other Financing Sources	375,645.23
TOTAL FROM ALL SOURCES	\$72,284,624.41

General Fund (10)

	<u>Total</u>
1000 Instruction	
100 Personnel Services – Salaries	
100 Personnel Services – Salaries	20,618,022.14
Total Personnel Services – Salaries	\$20,618,022.14
200 Personnel Services – Employee Benefits	
210 Group Insurance – Contracted Provider	4,759,038.39
220 Social Security Contributions	1,528,129.47
230 PSERS Retirement Contributions	6,161,103.36
250 Unemployment Compensation	7,261.90
260 Workers’ Compensation	156,205.25
270 Group Insurance – Self-Insurance	524,577.94
291 Other Retirement Plans	34,407.00
Total Personnel Services – Employee Benefits	\$13,170,723.31
300 Purchased Professional and Technical Services	
322 Professional Educational Services – Ius	281,517.86
323 Professional Educational Services – Other Educational Agencies	3,834.00
329 Professional Educational Services – Other	647,218.44
330 Other Professional Services	320,280.39
340 Technical Services	(6,219.68)
Total Purchased Professional and Technical Services	\$1,246,631.01
400 Purchased Property Services	
430 Repairs and Maintenance Services	9,532.76
440 Rentals	290,560.77
Total Purchased Property Services	\$300,093.53
500 Other Purchased Services	
530 Communications	17,000.00
550 Printing and Binding	587.75
561 Tuition To Other School Districts Within the State	89,845.60
562 Tuition To Pennsylvania Charter Schools	981,686.70
563 Tuition To Nonpublic Schools	1,171,084.99
564 Tuition To Career and Technology Centers	1,336,585.80
567 Tuition To Approved Private Schools (APS) and PA Chartered Schools for the Deaf and Blind	71,827.91
568 Tuition To Private Residential Rehabilitative Institutions (PRRI) [In-State] and Detention Centers	11,803.44
580 Travel	1,567.26
Total Other Purchased Services	\$3,681,989.45
600 Supplies	
610 General Supplies	428,877.50
630 Food	2,395.63
640 Books and Periodicals	155,930.70
650 Supplies & Fees – Technology Related	160,362.89
Total Supplies	\$747,566.72
700 Property	
752 Capital Equipment – Original and Additional	47,622.70
756 Capitalized Technology Hardware and Equipment – Original	61,548.45

LEA : 114062003 Exeter Township SD

Printed 12/1/2017 12:42:14 PM

General Fund (10)

1000 Instruction	<u>Total</u>
700 <u>Property</u>	
766 Capitalized Technology Hardware and Equipment – Replacement	352,276.20
790 Other Property	94,368.32
Total Property	\$555,815.67
800 <u>Other Objects</u>	
810 Dues and Fees	12,744.50
820 Claims and Judgments Against the LEA	22,500.00
890 Miscellaneous Expenditures	23,057.01
Total Other Objects	\$58,301.51
Total 1000 Instruction	\$40,379,143.34

General Fund (10)

1100 Regular Programs – Elementary / Secondary

	<u>Elementary</u>	<u>Secondary</u>	<u>Federal</u>	<u>Total</u>
100 Personnel Services – Salaries				
100 Personnel Services – Salaries	7,977,676.06	8,058,367.95	316,227.41	16,352,271.42
Total Personnel Services – Salaries	\$7,977,676.06	\$8,058,367.95	\$316,227.41	\$16,352,271.42
200 Personnel Services – Employee Benefits				
210 Group Insurance – Contracted Provider	1,608,902.01	1,558,032.71	59.67	3,166,994.39
220 Social Security Contributions	592,660.79	597,638.73	23,594.88	1,213,894.40
230 PSERS Retirement Contributions	2,371,384.23	2,421,458.04	91,776.98	4,884,619.25
250 Unemployment Compensation	118.53			118.53
260 Workers' Compensation	64,913.46	55,405.84		120,319.30
270 Group Insurance – Self-Insurance	176,293.94	193,063.83	559.51	369,917.28
291 Other Retirement Plans	23,177.00	8,640.00		31,817.00
Total Personnel Services – Employee Benefits	\$4,837,449.96	\$4,834,239.15	\$115,991.04	\$9,787,680.15
300 Purchased Professional and Technical Services				
322 Professional Educational Services – Ius	10,314.04	55,305.13		65,619.17
323 Professional Educational Services – Other Educational Agencies		3,834.00		3,834.00
329 Professional Educational Services – Other		19,600.00		19,600.00
340 Technical Services		(6,219.68)		(6,219.68)
Total Purchased Professional and Technical Services	\$10,314.04	\$72,519.45		\$82,833.49
400 Purchased Property Services				
430 Repairs and Maintenance Services		9,532.76		9,532.76
440 Rentals	88,966.67	201,594.10		290,560.77
Total Purchased Property Services	\$88,966.67	\$211,126.86		\$300,093.53
500 Other Purchased Services				
530 Communications	8,840.00	8,160.00		17,000.00
550 Printing and Binding	317.75	270.00		587.75
561 Tuition To Other School Districts Within the State		11,364.57		11,364.57
562 Tuition To Pennsylvania Charter Schools	169,786.60	458,014.51		627,801.11
563 Tuition To Nonpublic Schools		17,382.00		17,382.00
580 Travel	880.42	362.92		1,243.34
Total Other Purchased Services	\$179,824.77	\$495,554.00		\$675,378.77
600 Supplies				
610 General Supplies	191,496.07	183,343.08	12,425.02	387,264.17
630 Food	1,551.88	843.75		2,395.63
640 Books and Periodicals	(20.00)	141,139.03		141,119.03
650 Supplies & Fees – Technology Related	63,509.09	84,492.82		148,001.91
Total Supplies	\$256,537.04	\$409,818.68	\$12,425.02	\$678,780.74
700 Property				
752 Capital Equipment – Original and Additional		47,622.70		47,622.70
756 Capitalized Technology Hardware and Equipment – Original		48,752.45		48,752.45
766 Capitalized Technology Hardware and Equipment – Replacement	234,852.00	117,424.20		352,276.20
790 Other Property	46,221.60	48,146.72		94,368.32
Total Property	\$281,073.60	\$261,946.07		\$543,019.67

LEA : 114062003 Exeter Township SD

Printed 12/1/2017 12:42:14 PM

General Fund (10)

1100 Regular Programs – Elementary / Secondary

800 Other Objects

810 Dues and Fees

890 Miscellaneous Expenditures

Total Other Objects

Total 1100 Regular Programs – Elementary / Secondary

Elementary

Secondary

Federal

Total

64.65

67.35

132.00

23,057.01

23,057.01

\$64.65

\$23,124.36

\$23,189.01

\$13,631,906.79

\$14,366,696.52

\$444,643.47

\$28,443,246.78

General Fund (10)

1110 Regular Programs

	<u>Elementary</u>	<u>Secondary</u>	<u>Federal</u>	<u>Total</u>
100 Personnel Services – Salaries				
100 Personnel Services – Salaries	7,977,676.06	8,058,367.95		16,036,044.01
Total Personnel Services – Salaries	\$7,977,676.06	\$8,058,367.95		\$16,036,044.01
200 Personnel Services – Employee Benefits				
210 Group Insurance – Contracted Provider	1,608,902.01	1,558,032.71		3,166,934.72
220 Social Security Contributions	592,660.79	597,638.73		1,190,299.52
230 PSERS Retirement Contributions	2,371,384.23	2,421,458.04		4,792,842.27
250 Unemployment Compensation	118.53			118.53
260 Workers' Compensation	64,913.46	55,405.84		120,319.30
270 Group Insurance – Self-Insurance	176,293.94	193,063.83		369,357.77
291 Other Retirement Plans	23,177.00	8,640.00		31,817.00
Total Personnel Services – Employee Benefits	\$4,837,449.96	\$4,834,239.15		\$9,671,689.11
300 Purchased Professional and Technical Services				
322 Professional Educational Services – lus	10,314.04	55,305.13		65,619.17
323 Professional Educational Services – Other Educational Agencies		3,834.00		3,834.00
329 Professional Educational Services – Other		19,600.00		19,600.00
340 Technical Services		(6,219.68)		(6,219.68)
Total Purchased Professional and Technical Services	\$10,314.04	\$72,519.45		\$82,833.49
400 Purchased Property Services				
430 Repairs and Maintenance Services		9,532.76		9,532.76
440 Rentals	88,966.67	201,594.10		290,560.77
Total Purchased Property Services	\$88,966.67	\$211,126.86		\$300,093.53
500 Other Purchased Services				
530 Communications	8,840.00	8,160.00		17,000.00
550 Printing and Binding	317.75	270.00		587.75
561 Tuition To Other School Districts Within the State		11,364.57		11,364.57
562 Tuition To Pennsylvania Charter Schools	169,786.60	458,014.51		627,801.11
563 Tuition To Nonpublic Schools		17,382.00		17,382.00
580 Travel	880.42	362.92		1,243.34
Total Other Purchased Services	\$179,824.77	\$495,554.00		\$675,378.77
600 Supplies				
610 General Supplies	191,496.07	183,343.08		374,839.15
630 Food	1,551.88	843.75		2,395.63
640 Books and Periodicals	(20.00)	141,139.03		141,119.03
650 Supplies & Fees – Technology Related	63,509.09	84,492.82		148,001.91
Total Supplies	\$256,537.04	\$409,818.68		\$666,355.72
700 Property				
752 Capital Equipment – Original and Additional		47,622.70		47,622.70
756 Capitalized Technology Hardware and Equipment – Original		48,752.45		48,752.45
766 Capitalized Technology Hardware and Equipment – Replacement	234,852.00	117,424.20		352,276.20
790 Other Property	46,221.60	48,146.72		94,368.32
Total Property	\$281,073.60	\$261,946.07		\$543,019.67

LEA : 114062003 Exeter Township SD

Printed 12/1/2017 12:42:14 PM

General Fund (10)

1110 Regular Programs

800 Other Objects

810 Dues and Fees

890 Miscellaneous Expenditures

Total Other Objects

Total 1110 Regular Programs

Elementary

Secondary

Federal

Total

64.65

67.35

132.00

23,057.01

23,057.01

\$64.65

\$23,124.36

\$23,189.01

\$13,631,906.79

\$14,366,696.52

\$27,998,603.31

General Fund (10)

1190 Federally-Funded Regular Programs	<u>Elementary</u>	<u>Secondary</u>	<u>Federal</u>	<u>Total</u>
100 Personnel Services – Salaries				
100 Personnel Services – Salaries			316,227.41	316,227.41
Total Personnel Services – Salaries			\$316,227.41	\$316,227.41
200 Personnel Services – Employee Benefits				
210 Group Insurance – Contracted Provider			59.67	59.67
220 Social Security Contributions			23,594.88	23,594.88
230 PSERS Retirement Contributions			91,776.98	91,776.98
270 Group Insurance – Self-Insurance			559.51	559.51
Total Personnel Services – Employee Benefits			\$115,991.04	\$115,991.04
600 Supplies				
610 General Supplies			12,425.02	12,425.02
Total Supplies			\$12,425.02	\$12,425.02
Total 1190 Federally-Funded Regular Programs			\$444,643.47	\$444,643.47

General Fund (10)

1200 Special Programs – Elementary / Secondary

	<u>Elementary</u>	<u>Secondary</u>	<u>Federal</u>	<u>Total</u>
100 Personnel Services – Salaries				
100 Personnel Services – Salaries	1,880,137.48	1,741,919.58	512,371.96	4,134,429.02
Total Personnel Services – Salaries	\$1,880,137.48	\$1,741,919.58	\$512,371.96	\$4,134,429.02
200 Personnel Services – Employee Benefits				
210 Group Insurance – Contracted Provider	883,915.06	690,216.79		1,574,131.85
220 Social Security Contributions	137,387.26	127,911.95	39,195.29	304,494.50
230 PSERS Retirement Contributions	607,226.80	552,021.05	78,912.98	1,238,160.83
250 Unemployment Compensation	2,076.37	5,067.00		7,143.37
260 Workers' Compensation	19,633.43	15,401.67		35,035.10
270 Group Insurance – Self-Insurance	78,369.69	74,896.88		153,266.57
291 Other Retirement Plans		2,590.00		2,590.00
Total Personnel Services – Employee Benefits	\$1,728,608.61	\$1,468,105.34	\$118,108.27	\$3,314,822.22
300 Purchased Professional and Technical Services				
322 Professional Educational Services – lus	73,124.69	139,474.24		212,598.93
329 Professional Educational Services – Other	300,209.18	323,644.26	3,765.00	627,618.44
330 Other Professional Services	248,080.60	72,199.79		320,280.39
Total Purchased Professional and Technical Services	\$621,414.47	\$535,318.29	\$3,765.00	\$1,160,497.76
500 Other Purchased Services				
561 Tuition To Other School Districts Within the State		53,974.26		53,974.26
562 Tuition To Pennsylvania Charter Schools	78,811.83	275,073.76		353,885.59
563 Tuition To Nonpublic Schools	260,269.99	892,048.66		1,152,318.65
567 Tuition To Approved Private Schools (APS) and PA Chartered Schools for the Deaf and Blind	35,181.31	36,646.60		71,827.91
568 Tuition To Private Residential Rehabilitative Institutions (PRRI) [In-State] and Detention Centers	11,803.44			11,803.44
580 Travel	187.79	136.13		323.92
Total Other Purchased Services	\$386,254.36	\$1,257,879.41		\$1,644,133.77
600 Supplies				
610 General Supplies	22,817.46	18,795.87		41,613.33
640 Books and Periodicals	3,458.58	2,308.88		5,767.46
650 Supplies & Fees – Technology Related	5,300.25	7,060.73		12,360.98
Total Supplies	\$31,576.29	\$28,165.48		\$59,741.77
700 Property				
756 Capitalized Technology Hardware and Equipment – Original	12,796.00			12,796.00
Total Property	\$12,796.00			\$12,796.00
800 Other Objects				
820 Claims and Judgments Against the LEA	11,020.50	11,479.50		22,500.00
Total Other Objects	\$11,020.50	\$11,479.50		\$22,500.00
Total 1200 Special Programs – Elementary / Secondary	\$4,671,807.71	\$5,042,867.60	\$634,245.23	\$10,348,920.54

LEA : 114062003 Exeter Township SD

Printed 12/1/2017 12:42:14 PM

General Fund (10)

1210 Life Skills Support

	<u>Elementary</u>	<u>Secondary</u>	<u>Federal</u>	<u>Total</u>
100 Personnel Services – Salaries				
100 Personnel Services – Salaries	264,242.55	262,465.51		526,708.06
Total Personnel Services – Salaries	\$264,242.55	\$262,465.51		\$526,708.06
200 Personnel Services – Employee Benefits				
210 Group Insurance – Contracted Provider	164,636.01	140,702.52		305,338.53
220 Social Security Contributions	19,265.39	19,239.06		38,504.45
230 PSERS Retirement Contributions	79,079.67	78,920.29		157,999.96
260 Workers' Compensation	6,276.89	2,300.82		8,577.71
270 Group Insurance – Self-Insurance	19,379.11	13,920.36		33,299.47
Total Personnel Services – Employee Benefits	\$288,637.07	\$255,083.05		\$543,720.12
300 Purchased Professional and Technical Services				
322 Professional Educational Services – lus		10,857.18		10,857.18
Total Purchased Professional and Technical Services		\$10,857.18		\$10,857.18
500 Other Purchased Services				
563 Tuition To Nonpublic Schools	8,995.72	12,492.00		21,487.72
Total Other Purchased Services	\$8,995.72	\$12,492.00		\$21,487.72
600 Supplies				
610 General Supplies	3,660.13	6,134.93		9,795.06
640 Books and Periodicals	1,226.41	784.35		2,010.76
Total Supplies	\$4,886.54	\$6,919.28		\$11,805.82
700 Property				
756 Capitalized Technology Hardware and Equipment – Original	1,498.00			1,498.00
Total Property	\$1,498.00			\$1,498.00
Total 1210 Life Skills Support	\$568,259.88	\$547,817.02		\$1,116,076.90

General Fund (10)

1220 Sensory Support

	<u>Elementary</u>	<u>Secondary</u>	<u>Federal</u>	<u>Total</u>
100 Personnel Services – Salaries				
100 Personnel Services – Salaries	138,283.32	13,055.64		151,338.96
Total Personnel Services – Salaries	\$138,283.32	\$13,055.64		\$151,338.96
200 Personnel Services – Employee Benefits				
210 Group Insurance – Contracted Provider	25,024.75	3,844.30		28,869.05
220 Social Security Contributions	10,298.09	955.02		11,253.11
230 PSERS Retirement Contributions	41,580.40	3,925.60		45,506.00
260 Workers' Compensation	924.52	86.76		1,011.28
270 Group Insurance – Self-Insurance	2,122.51	882.84		3,005.35
Total Personnel Services – Employee Benefits	\$79,950.27	\$9,694.52		\$89,644.79
300 Purchased Professional and Technical Services				
322 Professional Educational Services – lus	13,847.69	81,690.68		95,538.37
329 Professional Educational Services – Other	149,111.63	95,965.94	3,765.00	248,842.57
Total Purchased Professional and Technical Services	\$162,959.32	\$177,656.62	\$3,765.00	\$344,380.94
500 Other Purchased Services				
580 Travel	130.85	32.30		163.15
Total Other Purchased Services	\$130.85	\$32.30		\$163.15
600 Supplies				
610 General Supplies	4,514.26	2,268.73		6,782.99
640 Books and Periodicals	981.62			981.62
650 Supplies & Fees – Technology Related	19.99			19.99
Total Supplies	\$5,515.87	\$2,268.73		\$7,784.60
Total 1220 Sensory Support	\$386,839.63	\$202,707.81	\$3,765.00	\$593,312.44

General Fund (10)

1230 Emotional Support

	<u>Elementary</u>	<u>Secondary</u>	<u>Federal</u>	<u>Total</u>
100 Personnel Services – Salaries				
100 Personnel Services – Salaries	301,244.64	216,627.76		517,872.40
Total Personnel Services – Salaries	\$301,244.64	\$216,627.76		\$517,872.40
200 Personnel Services – Employee Benefits				
210 Group Insurance – Contracted Provider	198,280.52	131,508.14		329,788.66
220 Social Security Contributions	21,994.23	15,838.31		37,832.54
230 PSERS Retirement Contributions	90,607.80	65,141.16		155,748.96
260 Workers' Compensation	2,293.47	1,378.66		3,672.13
270 Group Insurance – Self-Insurance	14,458.21	12,136.43		26,594.64
Total Personnel Services – Employee Benefits	\$327,634.23	\$226,002.70		\$553,636.93
300 Purchased Professional and Technical Services				
322 Professional Educational Services – lus		17,433.22		17,433.22
329 Professional Educational Services – Other	115,145.34	77,764.67		192,910.01
Total Purchased Professional and Technical Services	\$115,145.34	\$95,197.89		\$210,343.23
500 Other Purchased Services				
561 Tuition To Other School Districts Within the State		53,684.34		53,684.34
563 Tuition To Nonpublic Schools	250,926.59	822,228.41		1,073,155.00
580 Travel	40.89			40.89
Total Other Purchased Services	\$250,967.48	\$875,912.75		\$1,126,880.23
600 Supplies				
610 General Supplies	1,092.45	6,882.53		7,974.98
640 Books and Periodicals	765.69			765.69
650 Supplies & Fees – Technology Related	377.79			377.79
Total Supplies	\$2,235.93	\$6,882.53		\$9,118.46
700 Property				
756 Capitalized Technology Hardware and Equipment – Original	750.00			750.00
Total Property	\$750.00			\$750.00
Total 1230 Emotional Support	\$997,977.62	\$1,420,623.63		\$2,418,601.25

LEA : 114062003 Exeter Township SD

Printed 12/1/2017 12:42:14 PM

General Fund (10)

1240 Academic Support

	<u>Elementary</u>	<u>Secondary</u>	<u>Federal</u>	<u>Total</u>
100 Personnel Services – Salaries				
100 Personnel Services – Salaries	1,112,142.64	1,169,020.69	439,440.96	2,720,604.29
Total Personnel Services – Salaries	\$1,112,142.64	\$1,169,020.69	\$439,440.96	\$2,720,604.29
200 Personnel Services – Employee Benefits				
210 Group Insurance – Contracted Provider	423,495.04	393,024.10		816,519.14
220 Social Security Contributions	81,284.51	85,944.13	33,616.29	200,844.93
230 PSERS Retirement Contributions	366,034.59	379,753.41	67,962.48	813,750.48
250 Unemployment Compensation	2,076.37	5,067.00		7,143.37
260 Workers' Compensation	9,313.05	10,995.70		20,308.75
270 Group Insurance – Self-Insurance	38,225.51	44,290.49		82,516.00
291 Other Retirement Plans		2,590.00		2,590.00
Total Personnel Services – Employee Benefits	\$920,429.07	\$921,664.83	\$101,578.77	\$1,943,672.67
300 Purchased Professional and Technical Services				
322 Professional Educational Services – Ius		29,493.16		29,493.16
329 Professional Educational Services – Other	545.86	91,162.75		91,708.61
Total Purchased Professional and Technical Services	\$545.86	\$120,655.91		\$121,201.77
500 Other Purchased Services				
561 Tuition To Other School Districts Within the State		289.92		289.92
562 Tuition To Pennsylvania Charter Schools	78,811.83	275,073.76		353,885.59
563 Tuition To Nonpublic Schools	347.68	55,438.25		55,785.93
580 Travel	16.05	103.83		119.88
Total Other Purchased Services	\$79,175.56	\$330,905.76		\$410,081.32
600 Supplies				
610 General Supplies	6,037.37	2,430.84		8,468.21
640 Books and Periodicals	71.54	1,524.53		1,596.07
650 Supplies & Fees – Technology Related	4,622.48	7,060.73		11,683.21
Total Supplies	\$10,731.39	\$11,016.10		\$21,747.49
700 Property				
756 Capitalized Technology Hardware and Equipment – Original	10,154.00			10,154.00
Total Property	\$10,154.00			\$10,154.00
800 Other Objects				
820 Claims and Judgments Against the LEA	11,020.50	11,479.50		22,500.00
Total Other Objects	\$11,020.50	\$11,479.50		\$22,500.00
Total 1240 Academic Support	\$2,144,199.02	\$2,564,742.79	\$541,019.73	\$5,249,961.54

LEA : 114062003 Exeter Township SD

Printed 12/1/2017 12:42:14 PM

Page - 13 of 25

General Fund (10)**1241 Learning Support – Public**

	<u>Elementary</u>	<u>Secondary</u>	<u>Federal</u>	<u>Total</u>
100 Personnel Services – Salaries				
100 Personnel Services – Salaries	980,087.28	1,015,256.53	439,440.96	2,434,784.77
Total Personnel Services – Salaries	\$980,087.28	\$1,015,256.53	\$439,440.96	\$2,434,784.77
200 Personnel Services – Employee Benefits				
210 Group Insurance – Contracted Provider	393,274.25	349,776.27		743,050.52
220 Social Security Contributions	71,525.57	74,672.86	33,616.29	179,814.72
230 PSERS Retirement Contributions	326,372.06	333,518.17	67,962.48	727,852.71
250 Unemployment Compensation	2,076.37	5,067.00		7,143.37
260 Workers' Compensation	8,377.63	9,984.67		18,362.30
270 Group Insurance – Self-Insurance	36,885.85	40,778.09		77,663.94
291 Other Retirement Plans		2,590.00		2,590.00
Total Personnel Services – Employee Benefits	\$838,511.73	\$816,387.06	\$101,578.77	\$1,756,477.56
300 Purchased Professional and Technical Services				
322 Professional Educational Services – lus		29,493.16		29,493.16
329 Professional Educational Services – Other	545.86	91,162.75		91,708.61
Total Purchased Professional and Technical Services	\$545.86	\$120,655.91		\$121,201.77
500 Other Purchased Services				
561 Tuition To Other School Districts Within the State		289.92		289.92
562 Tuition To Pennsylvania Charter Schools	78,811.83	275,073.76		353,885.59
563 Tuition To Nonpublic Schools	347.68	53,204.54		53,552.22
580 Travel	16.05	103.83		119.88
Total Other Purchased Services	\$79,175.56	\$328,672.05		\$407,847.61
600 Supplies				
610 General Supplies	5,235.31	2,094.51		7,329.82
640 Books and Periodicals	71.54	1,138.28		1,209.82
650 Supplies & Fees – Technology Related	4,622.48	7,060.73		11,683.21
Total Supplies	\$9,929.33	\$10,293.52		\$20,222.85
700 Property				
756 Capitalized Technology Hardware and Equipment – Original	10,154.00			10,154.00
Total Property	\$10,154.00			\$10,154.00
800 Other Objects				
820 Claims and Judgments Against the LEA	11,020.50	11,479.50		22,500.00
Total Other Objects	\$11,020.50	\$11,479.50		\$22,500.00
Total 1241 Learning Support – Public	\$1,929,424.26	\$2,302,744.57	\$541,019.73	\$4,773,188.56

General Fund (10)

1243 Gifted Support

	<u>Elementary</u>	<u>Secondary</u>	<u>Federal</u>	<u>Total</u>
100 Personnel Services – Salaries				
100 Personnel Services – Salaries	132,055.36	153,764.16		285,819.52
Total Personnel Services – Salaries	\$132,055.36	\$153,764.16		\$285,819.52
200 Personnel Services – Employee Benefits				
210 Group Insurance – Contracted Provider	30,220.79	43,247.83		73,468.62
220 Social Security Contributions	9,758.94	11,271.27		21,030.21
230 PSERS Retirement Contributions	39,662.53	46,235.24		85,897.77
260 Workers' Compensation	935.42	1,011.03		1,946.45
270 Group Insurance – Self-Insurance	1,339.66	3,512.40		4,852.06
Total Personnel Services – Employee Benefits	\$81,917.34	\$105,277.77		\$187,195.11
500 Other Purchased Services				
563 Tuition To Nonpublic Schools		2,233.71		2,233.71
Total Other Purchased Services		\$2,233.71		\$2,233.71
600 Supplies				
610 General Supplies	802.06	336.33		1,138.39
640 Books and Periodicals		386.25		386.25
Total Supplies	\$802.06	\$722.58		\$1,524.64
Total 1243 Gifted Support	\$214,774.76	\$261,998.22		\$476,772.98

General Fund (10)

1260 Physical Support

300 Purchased Professional and Technical Services

	<u>Elementary</u>	<u>Secondary</u>	<u>Federal</u>	<u>Total</u>
330 Other Professional Services	248,080.60	72,199.79		320,280.39
Total Purchased Professional and Technical Services	\$248,080.60	\$72,199.79		\$320,280.39

600 Supplies

610 General Supplies	4,224.88	599.86		4,824.74
Total Supplies	\$4,224.88	\$599.86		\$4,824.74
Total 1260 Physical Support	\$252,305.48	\$72,799.65		\$325,105.13

General Fund (10)

1270 Multi-Handicapped Support

	<u>Elementary</u>	<u>Secondary</u>	<u>Federal</u>	<u>Total</u>
100 Personnel Services – Salaries				
100 Personnel Services – Salaries	64,224.33	80,749.98	72,931.00	217,905.31
Total Personnel Services – Salaries	\$64,224.33	\$80,749.98	\$72,931.00	\$217,905.31
200 Personnel Services – Employee Benefits				
210 Group Insurance – Contracted Provider	72,478.74	21,137.73		93,616.47
220 Social Security Contributions	4,545.04	5,935.43	5,579.00	16,059.47
230 PSERS Retirement Contributions	29,924.34	24,280.59	10,950.50	65,155.43
260 Workers' Compensation	825.50	639.73		1,465.23
270 Group Insurance – Self-Insurance	4,184.35	3,666.76		7,851.11
Total Personnel Services – Employee Benefits	\$111,957.97	\$55,660.24	\$16,529.50	\$184,147.71
300 Purchased Professional and Technical Services				
322 Professional Educational Services – lus	12,897.50			12,897.50
329 Professional Educational Services – Other	35,406.35	58,750.90		94,157.25
Total Purchased Professional and Technical Services	\$48,303.85	\$58,750.90		\$107,054.75
500 Other Purchased Services				
563 Tuition To Nonpublic Schools		1,890.00		1,890.00
Total Other Purchased Services		\$1,890.00		\$1,890.00
600 Supplies				
610 General Supplies	3,288.37	478.98		3,767.35
640 Books and Periodicals	413.32			413.32
650 Supplies & Fees – Technology Related	279.99			279.99
Total Supplies	\$3,981.68	\$478.98		\$4,460.66
700 Property				
756 Capitalized Technology Hardware and Equipment – Original	394.00			394.00
Total Property	\$394.00			\$394.00
Total 1270 Multi-Handicapped Support	\$228,861.83	\$197,530.10	\$89,460.50	\$515,852.43

General Fund (10)

1280 Early Intervention Support

300 Purchased Professional and Technical Services

322 Professional Educational Services – lus

Total Purchased Professional and Technical Services

Total 1280 Early Intervention Support

Elementary

Secondary

Federal

Total

46,379.50

46,379.50

\$46,379.50

\$46,379.50

\$46,379.50

\$46,379.50

General Fund (10)

1290 Special Programs - Other Support

500 Other Purchased Services

	<u>Elementary</u>	<u>Secondary</u>	<u>Federal</u>	<u>Total</u>
567 Tuition To Approved Private Schools (APS) and PA Chartered Schools for the Deaf and Blind	35,181.31	36,646.60		71,827.91
568 Tuition To Private Residential Rehabilitative Institutions (PRRI) [In-State] and Detention Centers	11,803.44			11,803.44
Total Other Purchased Services	\$46,984.75	\$36,646.60		\$83,631.35
Total 1290 Special Programs - Other Support	\$46,984.75	\$36,646.60		\$83,631.35

General Fund (10)

1300 Vocational Education

	<u>Elementary</u>	<u>Secondary</u>	<u>Federal</u>	<u>Total</u>
100 Personnel Services – Salaries				
100 Personnel Services – Salaries		121,601.70		121,601.70
Total Personnel Services – Salaries		\$121,601.70		\$121,601.70
200 Personnel Services – Employee Benefits				
210 Group Insurance – Contracted Provider		17,912.15		17,912.15
220 Social Security Contributions		8,996.94		8,996.94
230 PSERS Retirement Contributions		36,564.23		36,564.23
260 Workers' Compensation		791.21		791.21
270 Group Insurance – Self-Insurance		1,394.09		1,394.09
Total Personnel Services – Employee Benefits		\$65,658.62		\$65,658.62
500 Other Purchased Services				
564 Tuition To Career and Technology Centers		1,336,585.80		1,336,585.80
Total Other Purchased Services		\$1,336,585.80		\$1,336,585.80
600 Supplies				
640 Books and Periodicals		9,044.21		9,044.21
Total Supplies		\$9,044.21		\$9,044.21
Total 1300 Vocational Education		\$1,532,890.33		\$1,532,890.33

General Fund (10)

	<u>Elementary</u>	<u>Secondary</u>	<u>Federal</u>	<u>Total</u>
1400 Other Instructional Programs – Elementary / Secondary				
100 Personnel Services – Salaries				
100 Personnel Services – Salaries	4,760.86	4,959.14		9,720.00
Total Personnel Services – Salaries	\$4,760.86	\$4,959.14		\$9,720.00
200 Personnel Services – Employee Benefits				
220 Social Security Contributions	364.23	379.40		743.63
230 PSERS Retirement Contributions	861.58	897.47		1,759.05
260 Workers’ Compensation	29.21	30.43		59.64
Total Personnel Services – Employee Benefits	\$1,255.02	\$1,307.30		\$2,562.32
300 Purchased Professional and Technical Services				
322 Professional Educational Services – Ius		3,299.76		3,299.76
Total Purchased Professional and Technical Services		\$3,299.76		\$3,299.76
500 Other Purchased Services				
561 Tuition To Other School Districts Within the State	1,529.68	22,977.09		24,506.77
563 Tuition To Nonpublic Schools		1,384.34		1,384.34
Total Other Purchased Services	\$1,529.68	\$24,361.43		\$25,891.11
800 Other Objects				
810 Dues and Fees	12,612.50			12,612.50
Total Other Objects	\$12,612.50			\$12,612.50
Total 1400 Other Instructional Programs – Elementary / Secondary	\$20,158.06	\$33,927.63		\$54,085.69

LEA : 114062003 Exeter Township SD

Printed 12/1/2017 12:42:14 PM

General Fund (10)

1420 Summer School

800 Other Objects

810 Dues and Fees

Total Other Objects

Total 1420 Summer School

Elementary

Secondary

Federal

Total

12,612.50

12,612.50

\$12,612.50

\$12,612.50

\$12,612.50

\$12,612.50

General Fund (10)

	<u>Elementary</u>	<u>Secondary</u>	<u>Federal</u>	<u>Total</u>
1430 Homebound Instruction				
100 Personnel Services – Salaries				
100 Personnel Services – Salaries	4,760.86	4,959.14		9,720.00
Total Personnel Services – Salaries	\$4,760.86	\$4,959.14		\$9,720.00
200 Personnel Services – Employee Benefits				
220 Social Security Contributions	364.23	379.40		743.63
230 PSERS Retirement Contributions	861.58	897.47		1,759.05
260 Workers’ Compensation	29.21	30.43		59.64
Total Personnel Services – Employee Benefits	\$1,255.02	\$1,307.30		\$2,562.32
Total 1430 Homebound Instruction	\$6,015.88	\$6,266.44		\$12,282.32

LEA : 114062003 Exeter Township SD

Printed 12/1/2017 12:42:14 PM

General Fund (10)

	<u>Elementary</u>	<u>Secondary</u>	<u>Federal</u>	<u>Total</u>
1440 Alternative Regular Education Programs				
300 <u>Purchased Professional and Technical Services</u>				
322 Professional Educational Services – lus		3,299.76		3,299.76
Total Purchased Professional and Technical Services		\$3,299.76		\$3,299.76
500 <u>Other Purchased Services</u>				
561 Tuition To Other School Districts Within the State	1,529.68	22,977.09		24,506.77
563 Tuition To Nonpublic Schools		1,384.34		1,384.34
Total Other Purchased Services	\$1,529.68	\$24,361.43		\$25,891.11
Total 1440 Alternative Regular Education Programs	\$1,529.68	\$27,661.19		\$29,190.87

LEA : 114062003 Exeter Township SD

Printed 12/1/2017 12:42:14 PM

General Fund (10)

1441 Adjudicated / Court-Placed Programs

500 Other Purchased Services

561 Tuition To Other School Districts Within the State

Total Other Purchased Services

Total 1441 Adjudicated / Court-Placed Programs

Elementary

Secondary

Federal

Total

1,529.68

1,593.39

3,123.07

\$1,529.68

\$1,593.39

\$3,123.07

\$1,529.68

\$1,593.39

\$3,123.07

General Fund (10)

1442 Alternative Education Programs

Elementary

Secondary

Federal

Total

300 Purchased Professional and Technical Services

322 Professional Educational Services – lus

3,299.76

3,299.76

Total Purchased Professional and Technical Services

\$3,299.76

\$3,299.76

500 Other Purchased Services

561 Tuition To Other School Districts Within the State

21,383.70

21,383.70

563 Tuition To Nonpublic Schools

1,384.34

1,384.34

Total Other Purchased Services

\$22,768.04

\$22,768.04

Total 1442 Alternative Education Programs

\$26,067.80

\$26,067.80

General Fund (10)

2000 Support Services

Total

100 Personnel Services – Salaries

100 Personnel Services – Salaries 8,356,412.83

Total Personnel Services – Salaries \$8,356,412.83

200 Personnel Services – Employee Benefits

210 Group Insurance – Contracted Provider 2,059,430.70

220 Social Security Contributions 619,638.00

230 PSERS Retirement Contributions 2,462,102.88

240 Tuition Reimbursement 119,643.65

250 Unemployment Compensation 23,383.56

260 Workers' Compensation 64,277.96

270 Group Insurance – Self-Insurance 212,821.75

291 Other Retirement Plans 73,631.30

299 All Other Employee Benefits 66,656.12

Total Personnel Services – Employee Benefits \$5,701,585.92

300 Purchased Professional and Technical Services

310 Official / Administrative Services 8,500.72

322 Professional Educational Services – Ius 17,061.00

324 Professional Educational Services – Employee Training and Development Services 30,436.10

329 Professional Educational Services – Other 232,639.17

330 Other Professional Services 154,587.40

340 Technical Services 105,266.64

390 Other Purchased Professional and Technical Services 193,045.58

Total Purchased Professional and Technical Services \$741,536.61

400 Purchased Property Services

410 Cleaning Services 41,488.39

420 Utility Services 179,426.77

430 Repairs and Maintenance Services 463,050.04

440 Rentals 32,840.76

460 Extermination Services 7,845.00

Total Purchased Property Services \$724,650.96

500 Other Purchased Services

513 Contracted Carriers 111,306.97

516 Student Transportation Services From the IU 21,744.16

520 Insurance – General 29,795.56

521 Fire Insurance 92,150.00

522 Automotive Liability Insurance 36,172.00

523 General Property and Liability Insurance 14,825.00

530 Communications 157,654.97

541 Advertising Related to Federal Grant Awards 1,062.80

542 Public Relations Related to Federal Grant Awards 1,700.63

550 Printing and Binding 972.25

580 Travel 16,809.68

595 IU Payments By Withholding 48,888.94

Total Other Purchased Services \$533,082.96

General Fund (10)

2000 Support Services

Total

600 Supplies

610 General Supplies	481,882.73
620 Energy	1,068,718.19
630 Food	10,326.95
640 Books and Periodicals	41,935.65
650 Supplies & Fees – Technology Related	222,729.76

Total Supplies	\$1,825,593.28
-----------------------	-----------------------

700 Property

752 Capital Equipment – Original and Additional	18,850.00
756 Capitalized Technology Hardware and Equipment – Original	3,800.00
762 Capitalized Equipment - Replacement	301,876.32
766 Capitalized Technology Hardware and Equipment – Replacement	31,680.46
768 Capitalized Technology Software - Replacement	18,225.00
790 Other Property	59,456.99

Total Property	\$433,888.77
-----------------------	---------------------

800 Other Objects

810 Dues and Fees	67,807.50
890 Miscellaneous Expenditures	(259.90)

Total Other Objects	\$67,547.60
----------------------------	--------------------

Total 2000 Support Services	\$18,384,298.93
------------------------------------	------------------------

LEA : 114062003 Exeter Township SD

Printed 12/1/2017 12:42:17 PM

Page - 3 of 56

General Fund (10)**2100 Support Services – Students**

	<u>Elementary</u>	<u>Secondary</u>	<u>Federal</u>	<u>Total</u>
100 Personnel Services – Salaries				
100 Personnel Services – Salaries	465,673.75	715,194.99		1,195,204.18
Total Personnel Services – Salaries	\$465,673.75	\$715,194.99		\$1,195,204.18
200 Personnel Services – Employee Benefits				
210 Group Insurance – Contracted Provider	91,694.87	149,679.24		241,400.92
220 Social Security Contributions	34,648.63	53,336.90		89,079.99
230 PSERS Retirement Contributions	139,683.60	214,072.32		357,909.45
260 Workers' Compensation	3,283.51	4,972.10		8,368.93
270 Group Insurance – Self-Insurance	12,228.03	17,373.94		30,408.24
291 Other Retirement Plans		44,585.00		44,585.00
Total Personnel Services – Employee Benefits	\$281,538.64	\$484,019.50		\$771,752.53
300 Purchased Professional and Technical Services				
329 Professional Educational Services – Other	59,597.97	62,530.20		122,128.17
340 Technical Services		500.00		500.00
390 Other Purchased Professional and Technical Services			49,285.00	49,285.00
Total Purchased Professional and Technical Services	\$59,597.97	\$63,030.20	\$49,285.00	\$171,913.17
500 Other Purchased Services				
580 Travel	143.03	148.99		483.55
Total Other Purchased Services	\$143.03	\$148.99		\$483.55
600 Supplies				
610 General Supplies	3,496.16	6,806.32		10,302.48
630 Food	14.19	14.79		28.98
650 Supplies & Fees – Technology Related		5,334.30		15,567.30
Total Supplies	\$3,510.35	\$12,155.41		\$25,898.76
Total 2100 Support Services – Students	\$810,463.74	\$1,274,549.09	\$49,285.00	\$2,165,252.19

General Fund (10)

2110 Supervision of Student Services

100 Personnel Services – Salaries

100 Personnel Services – Salaries

Total Personnel Services – Salaries

200 Personnel Services – Employee Benefits

220 Social Security Contributions

260 Workers' Compensation

Total Personnel Services – Employee Benefits

Total 2110 Supervision of Student Services

	<u>Elementary</u>	<u>Secondary</u>	<u>Federal</u>	<u>Total</u>
		1,200.00		1,200.00
		\$1,200.00		\$1,200.00
		91.80		91.80
		9.02		9.02
		\$100.82		\$100.82
		\$1,300.82		\$1,300.82

General Fund (10)

2119 Supervision of Student Services – All Other Supervision

100 Personnel Services – Salaries

	<u>Elementary</u>	<u>Secondary</u>	<u>Federal</u>	<u>Total</u>
100 Personnel Services – Salaries		1,200.00		1,200.00
Total Personnel Services – Salaries		\$1,200.00		\$1,200.00
200 Personnel Services – Employee Benefits				
220 Social Security Contributions		91.80		91.80
260 Workers' Compensation		9.02		9.02
Total Personnel Services – Employee Benefits		\$100.82		\$100.82
Total 2119 Supervision of Student Services – All Other Supervision		\$1,300.82		\$1,300.82

General Fund (10)

	<u>Elementary</u>	<u>Secondary</u>	<u>Federal</u>	<u>Total</u>
2120 Guidance Services				
100 Personnel Services – Salaries				
100 Personnel Services – Salaries	336,867.21	579,823.70		916,690.91
Total Personnel Services – Salaries	\$336,867.21	\$579,823.70		\$916,690.91
200 Personnel Services – Employee Benefits				
210 Group Insurance – Contracted Provider	60,796.95	117,494.43		178,291.38
220 Social Security Contributions	25,130.39	43,330.42		68,460.81
230 PSERS Retirement Contributions	101,679.24	174,485.10		276,164.34
260 Workers' Compensation	2,277.16	3,914.82		6,191.98
270 Group Insurance – Self-Insurance	7,309.22	12,250.26		19,559.48
291 Other Retirement Plans		44,585.00		44,585.00
Total Personnel Services – Employee Benefits	\$197,192.96	\$396,060.03		\$593,252.99
300 Purchased Professional and Technical Services				
329 Professional Educational Services – Other		450.00		450.00
340 Technical Services		500.00		500.00
390 Other Purchased Professional and Technical Services			49,285.00	49,285.00
Total Purchased Professional and Technical Services		\$950.00	\$49,285.00	\$50,235.00
600 Supplies				
610 General Supplies	1,056.41	4,264.96		5,321.37
630 Food	14.19	14.79		28.98
650 Supplies & Fees – Technology Related		5,334.30		5,334.30
Total Supplies	\$1,070.60	\$9,614.05		\$10,684.65
Total 2120 Guidance Services	\$535,130.77	\$986,447.78	\$49,285.00	\$1,570,863.55

General Fund (10)

	<u>Elementary</u>	<u>Secondary</u>	<u>Federal</u>	<u>Total</u>
2140 Psychological Services				
100 Personnel Services – Salaries				
100 Personnel Services – Salaries	128,806.54	134,171.29		262,977.83
Total Personnel Services – Salaries	\$128,806.54	\$134,171.29		\$262,977.83
200 Personnel Services – Employee Benefits				
210 Group Insurance – Contracted Provider	30,897.92	32,184.81		63,082.73
220 Social Security Contributions	9,518.24	9,914.68		19,432.92
230 PSERS Retirement Contributions	38,004.36	39,587.22		77,591.58
260 Workers' Compensation	1,006.35	1,048.26		2,054.61
270 Group Insurance – Self-Insurance	4,918.81	5,123.68		10,042.49
Total Personnel Services – Employee Benefits	\$84,345.68	\$87,858.65		\$172,204.33
300 Purchased Professional and Technical Services				
329 Professional Educational Services – Other	59,597.97	62,080.20		121,678.17
Total Purchased Professional and Technical Services	\$59,597.97	\$62,080.20		\$121,678.17
500 Other Purchased Services				
580 Travel	143.03	148.99		292.02
Total Other Purchased Services	\$143.03	\$148.99		\$292.02
600 Supplies				
610 General Supplies	2,439.75	2,541.36		4,981.11
Total Supplies	\$2,439.75	\$2,541.36		\$4,981.11
Total 2140 Psychological Services	\$275,332.97	\$286,800.49		\$562,133.46

General Fund (10)

2170 Student Accounting Services

Elementary

Secondary

Federal

Total

100 Personnel Services – Salaries

100 Personnel Services – Salaries

14,335.44

Total Personnel Services – Salaries

\$14,335.44

200 Personnel Services – Employee Benefits

210 Group Insurance – Contracted Provider

26.81

220 Social Security Contributions

1,094.46

230 PSERS Retirement Contributions

4,153.53

260 Workers' Compensation

113.32

270 Group Insurance – Self-Insurance

806.27

Total Personnel Services – Employee Benefits

\$6,194.39

500 Other Purchased Services

580 Travel

191.53

Total Other Purchased Services

\$191.53

600 Supplies

650 Supplies & Fees – Technology Related

10,233.00

Total Supplies

\$10,233.00

Total 2170 Student Accounting Services

\$30,954.36

General Fund (10)

2200 Support Services – Instructional Staff

	<u>Elementary</u>	<u>Secondary</u>	<u>Federal</u>	<u>Total</u>
100 Personnel Services – Salaries				
100 Personnel Services – Salaries	598,017.11	462,279.87	198,470.07	1,258,767.05
Total Personnel Services – Salaries	\$598,017.11	\$462,279.87	\$198,470.07	\$1,258,767.05
200 Personnel Services – Employee Benefits				
210 Group Insurance – Contracted Provider	130,247.94	107,300.40	57,924.02	295,472.36
220 Social Security Contributions	44,297.71	34,131.49	14,373.18	92,802.38
230 PSERS Retirement Contributions	175,449.89	138,044.59	55,501.86	368,996.34
240 Tuition Reimbursement	36,612.74	62,672.91		99,285.65
260 Workers' Compensation	4,231.12	3,430.48		7,661.60
270 Group Insurance – Self-Insurance	11,672.41	16,238.91	2,339.23	30,250.55
299 All Other Employee Benefits	2,938.80	3,061.20	3,000.00	9,000.00
Total Personnel Services – Employee Benefits	\$405,450.61	\$364,879.98	\$133,138.29	\$903,468.88
300 Purchased Professional and Technical Services				
322 Professional Educational Services – lus			17,061.00	17,061.00
324 Professional Educational Services – Employee Training and Development Services	2,512.83	2,789.67	10,535.70	15,838.20
329 Professional Educational Services – Other	32,622.28	33,980.97	18,281.90	84,885.15
Total Purchased Professional and Technical Services	\$35,135.11	\$36,770.64	\$45,878.60	\$117,784.35
400 Purchased Property Services				
430 Repairs and Maintenance Services		963.85		963.85
440 Rentals	1,415.51	1,999.65		3,415.16
Total Purchased Property Services	\$1,415.51	\$2,963.50		\$4,379.01
500 Other Purchased Services				
530 Communications	571.43	595.24		1,166.67
580 Travel	2,229.64	4,457.23	1,210.22	7,897.09
Total Other Purchased Services	\$2,801.07	\$5,052.47	\$1,210.22	\$9,063.76
600 Supplies				
610 General Supplies	13,291.34	6,819.97	696.84	20,808.15
630 Food	4,995.92	5,203.99		10,199.91
640 Books and Periodicals	16,965.30	23,142.37		40,107.67
650 Supplies & Fees – Technology Related	11,907.34	22,619.82		34,527.16
Total Supplies	\$47,159.90	\$57,786.15	\$696.84	\$105,642.89
700 Property				
756 Capitalized Technology Hardware and Equipment – Original		3,800.00		3,800.00
766 Capitalized Technology Hardware and Equipment – Replacement	3,800.00			3,800.00
768 Capitalized Technology Software - Replacement	12,000.00	6,225.00		18,225.00
Total Property	\$15,800.00	\$10,025.00		\$25,825.00
800 Other Objects				
810 Dues and Fees	726.69	756.96		1,483.65
Total Other Objects	\$726.69	\$756.96		\$1,483.65
Total 2200 Support Services – Instructional Staff	\$1,106,506.00	\$940,514.57	\$379,394.02	\$2,426,414.59

General Fund (10)

2220 Technology Support Services

400 Purchased Property Services

430 Repairs and Maintenance Services

Total Purchased Property Services

600 Supplies

610 General Supplies

650 Supplies & Fees – Technology Related

Total Supplies

700 Property

756 Capitalized Technology Hardware and Equipment – Original

766 Capitalized Technology Hardware and Equipment – Replacement

768 Capitalized Technology Software - Replacement

Total Property

Total 2220 Technology Support Services

	<u>Elementary</u>	<u>Secondary</u>	<u>Federal</u>	<u>Total</u>
		963.85		963.85
Total Purchased Property Services		\$963.85		\$963.85
	1,919.76	696.34		2,616.10
	5,751.24	7,144.82		12,896.06
Total Supplies	\$7,671.00	\$7,841.16		\$15,512.16
		3,800.00		3,800.00
	3,800.00			3,800.00
	12,000.00	6,225.00		18,225.00
Total Property	\$15,800.00	\$10,025.00		\$25,825.00
Total 2220 Technology Support Services	\$23,471.00	\$18,830.01		\$42,301.01

General Fund (10)

	<u>Elementary</u>	<u>Secondary</u>	<u>Federal</u>	<u>Total</u>
2240 Computer-Assisted Instruction Support Services				
100 Personnel Services – Salaries				
100 Personnel Services – Salaries	66,329.40	69,092.00		135,421.40
Total Personnel Services – Salaries	\$66,329.40	\$69,092.00		\$135,421.40
200 Personnel Services – Employee Benefits				
210 Group Insurance – Contracted Provider	17,244.48	17,962.71		35,207.19
220 Social Security Contributions	4,876.97	5,080.10		9,957.07
230 PSERS Retirement Contributions	20,026.51	20,860.61		40,887.12
260 Workers' Compensation	226.45	235.88		462.33
270 Group Insurance – Self-Insurance	2,064.22	2,150.19		4,214.41
Total Personnel Services – Employee Benefits	\$44,438.63	\$46,289.49		\$90,728.12
Total 2240 Computer-Assisted Instruction Support Services	\$110,768.03	\$115,381.49		\$226,149.52

General Fund (10)

2250 School Library Services

	<u>Elementary</u>	<u>Secondary</u>	<u>Federal</u>	<u>Total</u>
100 Personnel Services – Salaries				
100 Personnel Services – Salaries	326,270.79	179,277.91		505,548.70
Total Personnel Services – Salaries	\$326,270.79	\$179,277.91		\$505,548.70
200 Personnel Services – Employee Benefits				
210 Group Insurance – Contracted Provider	59,223.17	33,317.47		92,540.64
220 Social Security Contributions	24,216.25	13,218.42		37,434.67
230 PSERS Retirement Contributions	94,663.52	53,909.67		148,573.19
260 Workers' Compensation	2,078.43	1,216.11		3,294.54
270 Group Insurance – Self-Insurance	5,226.10	9,524.12		14,750.22
Total Personnel Services – Employee Benefits	\$185,407.47	\$111,185.79		\$296,593.26
400 Purchased Property Services				
440 Rentals		525.18		525.18
Total Purchased Property Services		\$525.18		\$525.18
600 Supplies				
610 General Supplies	6,781.77	1,342.67		8,124.44
640 Books and Periodicals	14,845.94	20,934.74		35,780.68
650 Supplies & Fees – Technology Related	6,143.70	15,462.09		21,605.79
Total Supplies	\$27,771.41	\$37,739.50		\$65,510.91
Total 2250 School Library Services	\$539,449.67	\$328,728.38		\$868,178.05

General Fund (10)

	<u>Elementary</u>	<u>Secondary</u>	<u>Federal</u>	<u>Total</u>
2260 Instruction and Curriculum Development Services				
100 Personnel Services – Salaries				
100 Personnel Services – Salaries	205,356.92	213,909.96	194,760.83	614,027.71
Total Personnel Services – Salaries	\$205,356.92	\$213,909.96	\$194,760.83	\$614,027.71
200 Personnel Services – Employee Benefits				
210 Group Insurance – Contracted Provider	53,780.29	56,020.22	57,924.02	167,724.53
220 Social Security Contributions	15,199.90	15,832.97	14,173.57	45,206.44
230 PSERS Retirement Contributions	60,744.34	63,274.31	54,809.25	178,827.90
260 Workers' Compensation	1,455.06	1,515.67		2,970.73
270 Group Insurance – Self-Insurance	3,987.18	4,153.24	2,339.23	10,479.65
299 All Other Employee Benefits	2,938.80	3,061.20	3,000.00	9,000.00
Total Personnel Services – Employee Benefits	\$138,105.57	\$143,857.61	\$132,246.07	\$414,209.25
300 Purchased Professional and Technical Services				
324 Professional Educational Services – Employee Training and Development Services	195.92	204.08		400.00
329 Professional Educational Services – Other	32,622.28	33,980.97		66,603.25
Total Purchased Professional and Technical Services	\$32,818.20	\$34,185.05		\$67,003.25
400 Purchased Property Services				
440 Rentals	1,415.51	1,474.47		2,889.98
Total Purchased Property Services	\$1,415.51	\$1,474.47		\$2,889.98
500 Other Purchased Services				
530 Communications	571.43	595.24		1,166.67
580 Travel	2,121.99	2,210.38		4,332.37
Total Other Purchased Services	\$2,693.42	\$2,805.62		\$5,499.04
600 Supplies				
610 General Supplies	3,677.32	3,830.46		7,507.78
630 Food	8.70	9.06		17.76
640 Books and Periodicals	1,002.63	1,044.38		2,047.01
650 Supplies & Fees – Technology Related	12.40	12.91		25.31
Total Supplies	\$4,701.05	\$4,896.81		\$9,597.86
800 Other Objects				
810 Dues and Fees	726.69	756.96		1,483.65
Total Other Objects	\$726.69	\$756.96		\$1,483.65
Total 2260 Instruction and Curriculum Development Services	\$385,817.36	\$401,886.48	\$327,006.90	\$1,114,710.74

General Fund (10)

	<u>Elementary</u>	<u>Secondary</u>	<u>Federal</u>	<u>Total</u>
2270 Instructional Staff Professional Development Services				
100 Personnel Services – Salaries				
100 Personnel Services – Salaries	60.00		3,709.24	3,769.24
Total Personnel Services – Salaries	\$60.00		\$3,709.24	\$3,769.24
200 Personnel Services – Employee Benefits				
220 Social Security Contributions	4.59		199.61	204.20
230 PSERS Retirement Contributions	15.52		692.61	708.13
240 Tuition Reimbursement	36,612.74	62,672.91		99,285.65
260 Workers' Compensation	471.18	462.82		934.00
270 Group Insurance – Self-Insurance	394.91	411.36		806.27
Total Personnel Services – Employee Benefits	\$37,498.94	\$63,547.09	\$892.22	\$101,938.25
300 Purchased Professional and Technical Services				
324 Professional Educational Services – Employee Training and Development Services	2,316.91	2,585.59	10,535.70	15,438.20
329 Professional Educational Services – Other			17,182.71	17,182.71
Total Purchased Professional and Technical Services	\$2,316.91	\$2,585.59	\$27,718.41	\$32,620.91
500 Other Purchased Services				
580 Travel	107.65	2,246.85	1,210.22	3,564.72
Total Other Purchased Services	\$107.65	\$2,246.85	\$1,210.22	\$3,564.72
600 Supplies				
610 General Supplies	912.49	950.50	696.84	2,559.83
630 Food	4,987.22	5,194.93		10,182.15
640 Books and Periodicals	1,116.73	1,163.25		2,279.98
Total Supplies	\$7,016.44	\$7,308.68	\$696.84	\$15,021.96
Total 2270 Instructional Staff Professional Development Services	\$46,999.94	\$75,688.21	\$34,226.93	\$156,915.08

LEA : 114062003 Exeter Township SD

Printed 12/1/2017 12:42:17 PM

General Fund (10)

2280 Nonpublic Support Services

300 Purchased Professional and Technical Services

322 Professional Educational Services – Ius

329 Professional Educational Services – Other

Total Purchased Professional and Technical Services

Total 2280 Nonpublic Support Services

Elementary

Secondary

Federal

Total

17,061.00

17,061.00

1,099.19

1,099.19

\$18,160.19

\$18,160.19

\$18,160.19

\$18,160.19

General Fund (10)

	<u>Elementary</u>	<u>Secondary</u>	<u>Federal</u>	<u>Total</u>
2300 Support Services – Administration				
100 Personnel Services – Salaries				
100 Personnel Services – Salaries	723,799.51	654,468.86		1,816,535.43
Total Personnel Services – Salaries	\$723,799.51	\$654,468.86		\$1,816,535.43
200 Personnel Services – Employee Benefits				
210 Group Insurance – Contracted Provider	226,700.24	157,326.69		461,990.64
220 Social Security Contributions	53,669.72	48,827.43		131,665.27
230 PSERS Retirement Contributions	215,738.78	191,756.42		518,633.56
260 Workers' Compensation	4,773.66	4,675.43		12,333.61
270 Group Insurance – Self-Insurance	21,206.96	14,719.36		43,538.58
299 All Other Employee Benefits	16,616.28	15,820.55		35,436.83
Total Personnel Services – Employee Benefits	\$538,705.64	\$433,125.88		\$1,203,598.49
300 Purchased Professional and Technical Services				
310 Official / Administrative Services				8,500.72
329 Professional Educational Services – Other				4,000.00
330 Other Professional Services				150,174.40
340 Technical Services				13,541.19
390 Other Purchased Professional and Technical Services				124,785.30
Total Purchased Professional and Technical Services				\$301,001.61
400 Purchased Property Services				
440 Rentals				2,356.09
Total Purchased Property Services				\$2,356.09
500 Other Purchased Services				
520 Insurance – General				29,795.56
530 Communications				15,835.91
542 Public Relations Related to Federal Grant Awards				1,241.60
550 Printing and Binding	657.23	315.02		972.25
580 Travel	413.01			2,756.99
Total Other Purchased Services	\$1,070.24	\$315.02		\$50,602.31
600 Supplies				
610 General Supplies	836.00	2,922.63		5,740.01
630 Food				98.06
640 Books and Periodicals				1,827.98
650 Supplies & Fees – Technology Related				8,300.00
Total Supplies	\$836.00	\$2,922.63		\$15,966.05
800 Other Objects				
810 Dues and Fees	3,661.00	2,393.00		62,112.35
Total Other Objects	\$3,661.00	\$2,393.00		\$62,112.35
Total 2300 Support Services – Administration	\$1,268,072.39	\$1,093,225.39		\$3,452,172.33

General Fund (10)

2310 Board Services

	<u>Elementary</u>	<u>Secondary</u>	<u>Federal</u>	<u>Total</u>
100 Personnel Services – Salaries				
100 Personnel Services – Salaries				2,310.86
Total Personnel Services – Salaries				\$2,310.86
200 Personnel Services – Employee Benefits				
210 Group Insurance – Contracted Provider				350.91
220 Social Security Contributions				168.31
230 PSERS Retirement Contributions				663.59
Total Personnel Services – Employee Benefits				\$1,182.81
300 Purchased Professional and Technical Services				
310 Official / Administrative Services				8,500.72
330 Other Professional Services				23,500.00
Total Purchased Professional and Technical Services				\$32,000.72
500 Other Purchased Services				
520 Insurance – General				23,205.00
542 Public Relations Related to Federal Grant Awards				1,241.60
Total Other Purchased Services				\$24,446.60
600 Supplies				
630 Food				98.06
650 Supplies & Fees – Technology Related				8,300.00
Total Supplies				\$8,398.06
800 Other Objects				
810 Dues and Fees				46,078.16
Total Other Objects				\$46,078.16
Total 2310 Board Services				\$114,417.21

General Fund (10)

2320 Board Treasurer Services

Elementary

Secondary

Federal

Total

500 Other Purchased Services

520 Insurance - General

537.50

Total Other Purchased Services

\$537.50

Total 2320 Board Treasurer Services

\$537.50

General Fund (10)

	<u>Elementary</u>	<u>Secondary</u>	<u>Federal</u>	<u>Total</u>
2330 Tax Assessment and Collection Services				
100 Personnel Services – Salaries				
100 Personnel Services – Salaries				46,146.40
Total Personnel Services – Salaries				\$46,146.40
200 Personnel Services – Employee Benefits				
220 Social Security Contributions				3,530.19
Total Personnel Services – Employee Benefits				\$3,530.19
300 Purchased Professional and Technical Services				
330 Other Professional Services				4,450.00
340 Technical Services				13,541.19
390 Other Purchased Professional and Technical Services				124,785.30
Total Purchased Professional and Technical Services				\$142,776.49
500 Other Purchased Services				
520 Insurance – General				6,053.06
530 Communications				12,735.91
Total Other Purchased Services				\$18,788.97
Total 2330 Tax Assessment and Collection Services				\$211,242.05

LEA : 114062003 Exeter Township SD

Printed 12/1/2017 12:42:17 PM

General Fund (10)

2350 Legal and Accounting Services

Elementary

Secondary

Federal

Total

300 Purchased Professional and Technical Services

330 Other Professional Services

122,224.40

Total Purchased Professional and Technical Services

\$122,224.40

Total 2350 Legal and Accounting Services

\$122,224.40

General Fund (10)

	<u>Elementary</u>	<u>Secondary</u>	<u>Federal</u>	<u>Total</u>
2360 Office of the Superintendent / Executive Director Services				
100 <u>Personnel Services – Salaries</u>				
100 Personnel Services – Salaries				389,809.80
Total Personnel Services – Salaries				\$389,809.80
200 <u>Personnel Services – Employee Benefits</u>				
210 Group Insurance – Contracted Provider				77,612.80
220 Social Security Contributions				25,469.62
230 PSERS Retirement Contributions				110,474.77
260 Workers' Compensation				2,884.52
270 Group Insurance – Self-Insurance				7,612.26
299 All Other Employee Benefits				3,000.00
Total Personnel Services – Employee Benefits				\$227,053.97
300 <u>Purchased Professional and Technical Services</u>				
329 Professional Educational Services – Other				4,000.00
Total Purchased Professional and Technical Services				\$4,000.00
400 <u>Purchased Property Services</u>				
440 Rentals				2,356.09
Total Purchased Property Services				\$2,356.09
500 <u>Other Purchased Services</u>				
580 Travel				2,343.98
Total Other Purchased Services				\$2,343.98
600 <u>Supplies</u>				
610 General Supplies				517.62
640 Books and Periodicals				1,827.98
Total Supplies				\$2,345.60
800 <u>Other Objects</u>				
810 Dues and Fees				9,980.19
Total Other Objects				\$9,980.19
Total 2360 Office of the Superintendent / Executive Director Services				\$637,889.63

LEA : 114062003 Exeter Township SD

Printed 12/1/2017 12:42:17 PM

General Fund (10)

2370 Community Relations Services

Elementary

Secondary

Federal

Total

500 Other Purchased Services

530 Communications

3,100.00

Total Other Purchased Services

\$3,100.00

600 Supplies

610 General Supplies

1,463.76

Total Supplies

\$1,463.76

Total 2370 Community Relations Services

\$4,563.76

General Fund (10)

	<u>Elementary</u>	<u>Secondary</u>	<u>Federal</u>	<u>Total</u>
2380 Office of the Principal Services				
100 Personnel Services – Salaries				
100 Personnel Services – Salaries	723,799.51	654,468.86		1,378,268.37
Total Personnel Services – Salaries	\$723,799.51	\$654,468.86		\$1,378,268.37
200 Personnel Services – Employee Benefits				
210 Group Insurance – Contracted Provider	226,700.24	157,326.69		384,026.93
220 Social Security Contributions	53,669.72	48,827.43		102,497.15
230 PSERS Retirement Contributions	215,738.78	191,756.42		407,495.20
260 Workers' Compensation	4,773.66	4,675.43		9,449.09
270 Group Insurance – Self-Insurance	21,206.96	14,719.36		35,926.32
299 All Other Employee Benefits	16,616.28	15,820.55		32,436.83
Total Personnel Services – Employee Benefits	\$538,705.64	\$433,125.88		\$971,831.52
500 Other Purchased Services				
550 Printing and Binding	657.23	315.02		972.25
580 Travel	413.01			413.01
Total Other Purchased Services	\$1,070.24	\$315.02		\$1,385.26
600 Supplies				
610 General Supplies	836.00	2,922.63		3,758.63
Total Supplies	\$836.00	\$2,922.63		\$3,758.63
800 Other Objects				
810 Dues and Fees	3,661.00	2,393.00		6,054.00
Total Other Objects	\$3,661.00	\$2,393.00		\$6,054.00
Total 2380 Office of the Principal Services	\$1,268,072.39	\$1,093,225.39		\$2,361,297.78

General Fund (10)

2400 Support Services – Pupil Health

Elementary

Secondary

Federal

Total

100 Personnel Services – Salaries

100 Personnel Services – Salaries

284,584.29

Total Personnel Services – Salaries

\$284,584.29

200 Personnel Services – Employee Benefits

210 Group Insurance – Contracted Provider

118,942.77

220 Social Security Contributions

20,404.00

230 PSERS Retirement Contributions

85,870.83

260 Workers' Compensation

2,330.06

270 Group Insurance – Self-Insurance

9,025.59

Total Personnel Services – Employee Benefits

\$236,573.25

300 Purchased Professional and Technical Services

329 Professional Educational Services – Other

4,678.50

Total Purchased Professional and Technical Services

\$4,678.50

400 Purchased Property Services

430 Repairs and Maintenance Services

502.55

Total Purchased Property Services

\$502.55

500 Other Purchased Services

580 Travel

39.59

Total Other Purchased Services

\$39.59

600 Supplies

610 General Supplies

10,620.26

Total Supplies

\$10,620.26

Total 2400 Support Services – Pupil Health

\$536,998.44

General Fund (10)

2440 Nursing Services

	<u>Elementary</u>	<u>Secondary</u>	<u>Federal</u>	<u>Total</u>
100 Personnel Services – Salaries				
100 Personnel Services – Salaries				284,584.29
Total Personnel Services – Salaries				\$284,584.29
200 Personnel Services – Employee Benefits				
210 Group Insurance – Contracted Provider				118,942.77
220 Social Security Contributions				20,404.00
230 PSERS Retirement Contributions				85,870.83
260 Workers' Compensation				2,330.06
270 Group Insurance – Self-Insurance				9,025.59
Total Personnel Services – Employee Benefits				\$236,573.25
300 Purchased Professional and Technical Services				
329 Professional Educational Services – Other				4,678.50
Total Purchased Professional and Technical Services				\$4,678.50
400 Purchased Property Services				
430 Repairs and Maintenance Services				502.55
Total Purchased Property Services				\$502.55
500 Other Purchased Services				
580 Travel				39.59
Total Other Purchased Services				\$39.59
600 Supplies				
610 General Supplies				10,620.26
Total Supplies				\$10,620.26
Total 2440 Nursing Services				\$536,998.44

General Fund (10)

	<u>Elementary</u>	<u>Secondary</u>	<u>Federal</u>	<u>Total</u>
2500 Support Services – Business				
100 Personnel Services – Salaries				
100 Personnel Services – Salaries				331,147.26
Total Personnel Services – Salaries				\$331,147.26
200 Personnel Services – Employee Benefits				
210 Group Insurance – Contracted Provider				92,614.90
220 Social Security Contributions				24,546.21
230 PSERS Retirement Contributions				98,178.46
260 Workers' Compensation				2,237.03
270 Group Insurance – Self-Insurance				8,678.55
299 All Other Employee Benefits				6,272.02
Total Personnel Services – Employee Benefits				\$232,527.17
300 Purchased Professional and Technical Services				
330 Other Professional Services				1,318.00
Total Purchased Professional and Technical Services				\$1,318.00
400 Purchased Property Services				
430 Repairs and Maintenance Services				152.25
440 Rentals				25,426.53
Total Purchased Property Services				\$25,578.78
500 Other Purchased Services				
542 Public Relations Related to Federal Grant Awards				459.03
580 Travel				404.71
Total Other Purchased Services				\$863.74
600 Supplies				
610 General Supplies				4,329.65
Total Supplies				\$4,329.65
800 Other Objects				
810 Dues and Fees				736.00
Total Other Objects				\$736.00
Total 2500 Support Services – Business				\$596,500.60

General Fund (10)

2510 Fiscal Services

Elementary Secondary Federal Total

100	<u>Personnel Services – Salaries</u>			
	100 Personnel Services – Salaries			298,042.16
Total Personnel Services – Salaries				\$298,042.16
200	<u>Personnel Services – Employee Benefits</u>			
	210 Group Insurance – Contracted Provider			77,250.15
	220 Social Security Contributions			22,075.21
	230 PSERS Retirement Contributions			88,224.19
	260 Workers' Compensation			2,016.69
	270 Group Insurance – Self-Insurance			8,600.38
	299 All Other Employee Benefits			6,272.02
Total Personnel Services – Employee Benefits				\$204,438.64
300	<u>Purchased Professional and Technical Services</u>			
	330 Other Professional Services			1,318.00
Total Purchased Professional and Technical Services				\$1,318.00
400	<u>Purchased Property Services</u>			
	430 Repairs and Maintenance Services			152.25
	440 Rentals			25,426.53
Total Purchased Property Services				\$25,578.78
500	<u>Other Purchased Services</u>			
	542 Public Relations Related to Federal Grant Awards			459.03
	580 Travel			404.71
Total Other Purchased Services				\$863.74
600	<u>Supplies</u>			
	610 General Supplies			4,329.65
Total Supplies				\$4,329.65
800	<u>Other Objects</u>			
	810 Dues and Fees			736.00
Total Other Objects				\$736.00
Total 2510 Fiscal Services				\$535,306.97

General Fund (10)

2511 Supervision of Fiscal Services - Head of Component

Elementary

Secondary

Federal

Total

100 Personnel Services – Salaries

100 Personnel Services – Salaries

127,824.76

Total Personnel Services – Salaries

\$127,824.76

200 Personnel Services – Employee Benefits

210 Group Insurance – Contracted Provider

19,586.39

220 Social Security Contributions

9,307.22

230 PSERS Retirement Contributions

37,041.91

260 Workers' Compensation

890.23

270 Group Insurance – Self-Insurance

334.86

299 All Other Employee Benefits

6,000.00

Total Personnel Services – Employee Benefits

\$73,160.61

Total 2511 Supervision of Fiscal Services - Head of Component

\$200,985.37

General Fund (10)

2513 Receiving and Disbursing Funds Services

Elementary

Secondary

Federal

Total

100 Personnel Services – Salaries

100 Personnel Services – Salaries

27,170.70

Total Personnel Services – Salaries

\$27,170.70

200 Personnel Services – Employee Benefits

210 Group Insurance – Contracted Provider

15,355.86

220 Social Security Contributions

2,017.24

230 PSERS Retirement Contributions

8,169.87

260 Workers' Compensation

181.98

270 Group Insurance – Self-Insurance

242.66

Total Personnel Services – Employee Benefits

\$25,967.61

Total 2513 Receiving and Disbursing Funds Services

\$53,138.31

General Fund (10)

2514 Payroll Services

Elementary

Secondary

Federal

Total

100 Personnel Services – Salaries

100 Personnel Services – Salaries

28,905.00

Total Personnel Services – Salaries

\$28,905.00

200 Personnel Services – Employee Benefits

210 Group Insurance – Contracted Provider

20,884.22

220 Social Security Contributions

2,127.47

230 PSERS Retirement Contributions

8,691.35

260 Workers' Compensation

181.98

270 Group Insurance – Self-Insurance

1,730.86

Total Personnel Services – Employee Benefits

\$33,615.88

Total 2514 Payroll Services

\$62,520.88

General Fund (10)

2515 Financial Accounting Services

Elementary

Secondary

Federal

Total

100 Personnel Services – Salaries

100 Personnel Services – Salaries

70,726.39

Total Personnel Services – Salaries

\$70,726.39

200 Personnel Services – Employee Benefits

210 Group Insurance – Contracted Provider

526.72

220 Social Security Contributions

5,385.64

230 PSERS Retirement Contributions

21,266.63

260 Workers' Compensation

476.94

270 Group Insurance – Self-Insurance

0.12

299 All Other Employee Benefits

272.02

Total Personnel Services – Employee Benefits

\$27,928.07

Total 2515 Financial Accounting Services

\$98,654.46

General Fund (10)

2519 Other Fiscal Services

Elementary Secondary Federal Total

100 Personnel Services – Salaries

100 Personnel Services – Salaries 43,415.31

Total Personnel Services – Salaries \$43,415.31

200 Personnel Services – Employee Benefits

210 Group Insurance – Contracted Provider 20,896.96

220 Social Security Contributions 3,237.64

230 PSERS Retirement Contributions 13,054.43

260 Workers' Compensation 285.56

270 Group Insurance – Self-Insurance 6,291.88

Total Personnel Services – Employee Benefits \$43,766.47

300 Purchased Professional and Technical Services

330 Other Professional Services 1,318.00

Total Purchased Professional and Technical Services \$1,318.00

400 Purchased Property Services

430 Repairs and Maintenance Services 152.25

440 Rentals 25,426.53

Total Purchased Property Services \$25,578.78

500 Other Purchased Services

542 Public Relations Related to Federal Grant Awards 459.03

580 Travel 404.71

Total Other Purchased Services \$863.74

600 Supplies

610 General Supplies 4,329.65

Total Supplies \$4,329.65

800 Other Objects

810 Dues and Fees 736.00

Total Other Objects \$736.00

Total 2519 Other Fiscal Services \$120,007.95

General Fund (10)

2540 Printing, Publishing and Duplicating Services

Elementary

Secondary

Federal

Total

100 Personnel Services – Salaries

100 Personnel Services – Salaries

33,105.10

Total Personnel Services – Salaries

\$33,105.10

200 Personnel Services – Employee Benefits

210 Group Insurance – Contracted Provider

15,364.75

220 Social Security Contributions

2,471.00

230 PSERS Retirement Contributions

9,954.27

260 Workers' Compensation

220.34

270 Group Insurance – Self-Insurance

78.17

Total Personnel Services – Employee Benefits

\$28,088.53

Total 2540 Printing, Publishing and Duplicating Services

\$61,193.63

General Fund (10)

2600 Operation and Maintenance of Plant Services

Elementary

Secondary

Federal

Total

100 Personnel Services – Salaries

100 Personnel Services – Salaries 1,545,602.55

Total Personnel Services – Salaries \$1,545,602.55

200 Personnel Services – Employee Benefits

210 Group Insurance – Contracted Provider 542,102.22

220 Social Security Contributions 116,696.40

230 PSERS Retirement Contributions 469,462.41

250 Unemployment Compensation 23,348.00

260 Workers' Compensation 17,205.60

270 Group Insurance – Self-Insurance 60,722.80

291 Other Retirement Plans 27,368.80

Total Personnel Services – Employee Benefits \$1,256,906.23

300 Purchased Professional and Technical Services

340 Technical Services 38,598.04

390 Other Purchased Professional and Technical Services 18,975.28

Total Purchased Professional and Technical Services \$57,573.32

400 Purchased Property Services

410 Cleaning Services 41,488.39

420 Utility Services 169,133.05

430 Repairs and Maintenance Services 406,864.35

460 Extermination Services 7,845.00

Total Purchased Property Services \$625,330.79

500 Other Purchased Services

521 Fire Insurance 92,150.00

522 Automotive Liability Insurance 7,872.00

523 General Property and Liability Insurance 14,825.00

530 Communications 93,904.38

Total Other Purchased Services \$208,751.38

600 Supplies

610 General Supplies 163,739.05 173,417.69 337,156.74

620 Energy 893,473.74

Total Supplies \$163,739.05 \$173,417.69 \$1,230,630.48

700 Property

762 Capitalized Equipment - Replacement 47,339.82

766 Capitalized Technology Hardware and Equipment – Replacement 27,880.46

790 Other Property 38,499.25

Total Property \$113,719.53

Total 2600 Operation and Maintenance of Plant Services \$163,739.05 \$173,417.69 \$5,038,514.28

General Fund (10)

2610 Supervision of Operation and Maintenance of Plant Services	<u>Elementary</u>	<u>Secondary</u>	<u>Federal</u>	<u>Total</u>
100 Personnel Services – Salaries				
100 Personnel Services – Salaries				175,612.33
Total Personnel Services – Salaries				\$175,612.33
200 Personnel Services – Employee Benefits				
210 Group Insurance – Contracted Provider				56,467.20
220 Social Security Contributions				12,935.94
230 PSERS Retirement Contributions				53,163.74
260 Workers' Compensation				1,102.35
270 Group Insurance – Self-Insurance				6,698.13
Total Personnel Services – Employee Benefits				\$130,367.36
Total 2610 Supervision of Operation and Maintenance of Plant Services				\$305,979.69

General Fund (10)

	<u>Elementary</u>	<u>Secondary</u>	<u>Federal</u>	<u>Total</u>
2611 Supervision of Operation and Maintenance of Plant Services – Head of Component				
100 Personnel Services – Salaries				
100 Personnel Services – Salaries				117,069.10
Total Personnel Services – Salaries				\$117,069.10
200 Personnel Services – Employee Benefits				
210 Group Insurance – Contracted Provider				36,882.13
220 Social Security Contributions				8,675.75
230 PSERS Retirement Contributions				35,560.55
260 Workers' Compensation				686.59
270 Group Insurance – Self-Insurance				3,445.84
Total Personnel Services – Employee Benefits				\$85,250.86
Total 2611 Supervision of Operation and Maintenance of Plant Services – Head of Component				\$202,319.96

General Fund (10)

2619 Supervision of Operation and Maintenance of Plant Services – All Other Supervision

Elementary

Secondary

Federal

Total

100 Personnel Services – Salaries

100 Personnel Services – Salaries

58,543.23

Total Personnel Services – Salaries

\$58,543.23

200 Personnel Services – Employee Benefits

210 Group Insurance – Contracted Provider

19,585.07

220 Social Security Contributions

4,260.19

230 PSERS Retirement Contributions

17,603.19

260 Workers' Compensation

415.76

270 Group Insurance – Self-Insurance

3,252.29

Total Personnel Services – Employee Benefits

\$45,116.50

Total 2619 Supervision of Operation and Maintenance of Plant Services – All Other Supervision

\$103,659.73

General Fund (10)

2620 Operation of Buildings Services

	<u>Elementary</u>	<u>Secondary</u>	<u>Federal</u>	<u>Total</u>
100 Personnel Services – Salaries				
100 Personnel Services – Salaries				1,179,724.32
Total Personnel Services – Salaries				\$1,179,724.32
200 Personnel Services – Employee Benefits				
210 Group Insurance – Contracted Provider				411,644.12
220 Social Security Contributions				89,517.46
230 PSERS Retirement Contributions				359,075.19
250 Unemployment Compensation				8,502.00
260 Workers' Compensation				14,582.81
270 Group Insurance – Self-Insurance				50,248.28
291 Other Retirement Plans				27,368.80
Total Personnel Services – Employee Benefits				\$960,938.66
300 Purchased Professional and Technical Services				
340 Technical Services				38,598.04
390 Other Purchased Professional and Technical Services				18,975.28
Total Purchased Professional and Technical Services				\$57,573.32
400 Purchased Property Services				
410 Cleaning Services				41,488.39
420 Utility Services				169,133.05
430 Repairs and Maintenance Services				406,754.35
460 Extermination Services				7,845.00
Total Purchased Property Services				\$625,220.79
500 Other Purchased Services				
521 Fire Insurance				92,150.00
522 Automotive Liability Insurance				7,872.00
523 General Property and Liability Insurance				14,825.00
530 Communications				93,904.38
Total Other Purchased Services				\$208,751.38
600 Supplies				
610 General Supplies	163,739.05	170,337.69		334,076.74
620 Energy				893,473.74
Total Supplies	\$163,739.05	\$170,337.69		\$1,227,550.48
700 Property				
762 Capitalized Equipment - Replacement				47,339.82
766 Capitalized Technology Hardware and Equipment – Replacement				27,880.46
790 Other Property				38,499.25
Total Property				\$113,719.53
Total 2620 Operation of Buildings Services	\$163,739.05	\$170,337.69		\$4,373,478.48

General Fund (10)

2630 Care and Upkeep of Grounds Services

Elementary

Secondary

Federal

Total

100 Personnel Services – Salaries

100 Personnel Services – Salaries

171,498.71

Total Personnel Services – Salaries

\$171,498.71

200 Personnel Services – Employee Benefits

210 Group Insurance – Contracted Provider

68,173.36

220 Social Security Contributions

12,847.87

230 PSERS Retirement Contributions

51,656.81

260 Workers' Compensation

1,504.17

270 Group Insurance – Self-Insurance

2,970.00

Total Personnel Services – Employee Benefits

\$137,152.21

Total 2630 Care and Upkeep of Grounds Services

\$308,650.92

General Fund (10)

2660 Safety and Security Services

Elementary Secondary Federal Total

100 Personnel Services – Salaries

100 Personnel Services – Salaries 18,767.19

Total Personnel Services – Salaries \$18,767.19

200 Personnel Services – Employee Benefits

210 Group Insurance – Contracted Provider 5,817.54

220 Social Security Contributions 1,395.13

230 PSERS Retirement Contributions 5,566.67

250 Unemployment Compensation 14,846.00

260 Workers' Compensation 16.27

270 Group Insurance – Self-Insurance 806.39

Total Personnel Services – Employee Benefits \$28,448.00

400 Purchased Property Services

430 Repairs and Maintenance Services 110.00

Total Purchased Property Services \$110.00

600 Supplies

610 General Supplies 3,080.00 3,080.00

Total Supplies \$3,080.00 \$3,080.00

Total 2660 Safety and Security Services \$3,080.00 \$50,405.19

General Fund (10)

	<u>Elementary</u>	<u>Secondary</u>	<u>Federal</u>	<u>Total</u>
2700 Student Transportation Services				
100 Personnel Services – Salaries				
100 Personnel Services – Salaries			25,496.94	1,322,414.19
Total Personnel Services – Salaries			\$25,496.94	\$1,322,414.19
200 Personnel Services – Employee Benefits				
210 Group Insurance – Contracted Provider				111,256.20
220 Social Security Contributions			1,943.59	99,961.20
230 PSERS Retirement Contributions			7,158.49	382,691.83
250 Unemployment Compensation				35.56
260 Workers' Compensation				9,588.56
270 Group Insurance – Self-Insurance				13,386.94
291 Other Retirement Plans				1,677.50
299 All Other Employee Benefits				8,939.49
Total Personnel Services – Employee Benefits			\$9,102.08	\$627,537.28
300 Purchased Professional and Technical Services				
330 Other Professional Services				2,708.00
Total Purchased Professional and Technical Services				\$2,708.00
400 Purchased Property Services				
420 Utility Services				10,293.72
430 Repairs and Maintenance Services				35,541.17
Total Purchased Property Services				\$45,834.89
500 Other Purchased Services				
513 Contracted Carriers				111,306.97
516 Student Transportation Services From the IU				21,744.16
522 Automotive Liability Insurance				28,300.00
530 Communications				9,928.79
Total Other Purchased Services				\$171,279.92
600 Supplies				
610 General Supplies				88,477.68
620 Energy				175,244.45
650 Supplies & Fees – Technology Related				7,989.05
Total Supplies				\$271,711.18
700 Property				
752 Capital Equipment – Original and Additional				18,850.00
762 Capitalized Equipment - Replacement				254,536.50
Total Property				\$273,386.50
800 Other Objects				
810 Dues and Fees				965.00
Total Other Objects				\$965.00
Total 2700 Student Transportation Services			\$34,599.02	\$2,715,836.96

General Fund (10)

2710 Supervision of Student Transportation Services

Elementary

Secondary

Federal

Total

100 Personnel Services – Salaries

100 Personnel Services – Salaries

196,222.81

Total Personnel Services – Salaries

\$196,222.81

200 Personnel Services – Employee Benefits

210 Group Insurance – Contracted Provider

44,670.65

220 Social Security Contributions

14,480.59

230 PSERS Retirement Contributions

58,430.69

260 Workers' Compensation

1,312.58

270 Group Insurance – Self-Insurance

2,238.26

299 All Other Employee Benefits

8,939.49

Total Personnel Services – Employee Benefits

\$130,072.26

Total 2710 Supervision of Student Transportation Services

\$326,295.07

General Fund (10)

2711 Supervision of Student Transportation Services – Head of Component

Elementary

Secondary

Federal

Total

100 Personnel Services – Salaries

100 Personnel Services – Salaries

136,390.96

Total Personnel Services – Salaries

\$136,390.96

200 Personnel Services – Employee Benefits

210 Group Insurance – Contracted Provider

30,138.92

220 Social Security Contributions

10,112.01

230 PSERS Retirement Contributions

40,439.94

260 Workers' Compensation

909.06

270 Group Insurance – Self-Insurance

1,617.55

299 All Other Employee Benefits

4,788.88

Total Personnel Services – Employee Benefits

\$88,006.36

Total 2711 Supervision of Student Transportation Services – Head of Component

\$224,397.32

General Fund (10)

2719 Supervision of Student Transportation Services – All Other Supervision

Elementary

Secondary

Federal

Total

100 Personnel Services – Salaries

100 Personnel Services – Salaries

59,831.85

Total Personnel Services – Salaries

\$59,831.85

200 Personnel Services – Employee Benefits

210 Group Insurance – Contracted Provider

14,531.73

220 Social Security Contributions

4,368.58

230 PSERS Retirement Contributions

17,990.75

260 Workers' Compensation

403.52

270 Group Insurance – Self-Insurance

620.71

299 All Other Employee Benefits

4,150.61

Total Personnel Services – Employee Benefits

\$42,065.90

Total 2719 Supervision of Student Transportation Services – All Other Supervision

\$101,897.75

LEA : 114062003 Exeter Township SD

Printed 12/1/2017 12:42:17 PM

Page - 45 of 56

General Fund (10)**2720 Vehicle Operation Services**

	<u>Elementary</u>	<u>Secondary</u>	<u>Federal</u>	<u>Total</u>
100 Personnel Services – Salaries				
100 Personnel Services – Salaries			25,496.94	745,677.09
Total Personnel Services – Salaries			\$25,496.94	\$745,677.09
200 Personnel Services – Employee Benefits				
210 Group Insurance – Contracted Provider				15,900.36
220 Social Security Contributions			1,943.59	56,649.93
230 PSERS Retirement Contributions			7,158.49	213,589.66
250 Unemployment Compensation				25.69
260 Workers' Compensation				5,415.69
270 Group Insurance – Self-Insurance				5,948.27
291 Other Retirement Plans				1,677.50
Total Personnel Services – Employee Benefits			\$9,102.08	\$299,207.10
300 Purchased Professional and Technical Services				
330 Other Professional Services				1,956.29
Total Purchased Professional and Technical Services				\$1,956.29
400 Purchased Property Services				
420 Utility Services				7,436.29
430 Repairs and Maintenance Services				25,675.31
Total Purchased Property Services				\$33,111.60
500 Other Purchased Services				
516 Student Transportation Services From the IU				21,744.16
522 Automotive Liability Insurance				20,444.21
530 Communications				7,172.66
Total Other Purchased Services				\$49,361.03
600 Supplies				
610 General Supplies				63,917.20
620 Energy				126,598.42
650 Supplies & Fees – Technology Related				5,771.37
Total Supplies				\$196,286.99
700 Property				
752 Capital Equipment – Original and Additional				13,617.44
762 Capitalized Equipment - Replacement				183,879.82
Total Property				\$197,497.26
800 Other Objects				
810 Dues and Fees				697.13
Total Other Objects				\$697.13
Total 2720 Vehicle Operation Services			\$34,599.02	\$1,523,794.49

General Fund (10)

2740 Vehicle Servicing and Maintenance Services

Elementary

Secondary

Federal

Total

100 Personnel Services – Salaries

100 Personnel Services – Salaries

95,026.57

Total Personnel Services – Salaries

\$95,026.57

200 Personnel Services – Employee Benefits

210 Group Insurance – Contracted Provider

44,575.40

220 Social Security Contributions

7,062.68

230 PSERS Retirement Contributions

28,598.66

260 Workers' Compensation

779.28

270 Group Insurance – Self-Insurance

2,914.75

Total Personnel Services – Employee Benefits

\$83,930.77

Total 2740 Vehicle Servicing and Maintenance Services

\$178,957.34

General Fund (10)

2750 Nonpublic Transportation

Elementary Secondary Federal Total

100	<u>Personnel Services – Salaries</u>				
	100 Personnel Services – Salaries				285,487.72
Total Personnel Services – Salaries					\$285,487.72
200	<u>Personnel Services – Employee Benefits</u>				
	210 Group Insurance – Contracted Provider				6,109.79
	220 Social Security Contributions				21,768.00
	230 PSERS Retirement Contributions				82,072.82
	250 Unemployment Compensation				9.87
	260 Workers' Compensation				2,081.01
	270 Group Insurance – Self-Insurance				2,285.66
Total Personnel Services – Employee Benefits					\$114,327.15
300	<u>Purchased Professional and Technical Services</u>				
	330 Other Professional Services				751.71
Total Purchased Professional and Technical Services					\$751.71
400	<u>Purchased Property Services</u>				
	420 Utility Services				2,857.43
	430 Repairs and Maintenance Services				9,865.86
Total Purchased Property Services					\$12,723.29
500	<u>Other Purchased Services</u>				
	513 Contracted Carriers				111,306.97
	522 Automotive Liability Insurance				7,855.79
	530 Communications				2,756.13
Total Other Purchased Services					\$121,918.89
600	<u>Supplies</u>				
	610 General Supplies				24,560.48
	620 Energy				48,646.03
	650 Supplies & Fees – Technology Related				2,217.68
Total Supplies					\$75,424.19
700	<u>Property</u>				
	752 Capital Equipment – Original and Additional				5,232.56
	762 Capitalized Equipment - Replacement				70,656.68
Total Property					\$75,889.24
800	<u>Other Objects</u>				
	810 Dues and Fees				267.87
Total Other Objects					\$267.87
Total 2750 Nonpublic Transportation					\$686,790.06

General Fund (10)

2800 Support Services – Central

Elementary Secondary Federal Total

100 Personnel Services – Salaries
100 Personnel Services – Salaries 602,157.88

Total Personnel Services – Salaries \$602,157.88

200 Personnel Services – Employee Benefits
210 Group Insurance – Contracted Provider 195,650.69
220 Social Security Contributions 44,482.55
230 PSERS Retirement Contributions 180,360.00
240 Tuition Reimbursement 20,358.00
260 Workers' Compensation 4,552.57
270 Group Insurance – Self-Insurance 16,810.50
299 All Other Employee Benefits 7,007.78

Total Personnel Services – Employee Benefits \$469,222.09

300 Purchased Professional and Technical Services
324 Professional Educational Services – Employee Training and Development Services 14,597.90
329 Professional Educational Services – Other 16,947.35
330 Other Professional Services 387.00
340 Technical Services 52,627.41

Total Purchased Professional and Technical Services \$84,559.66

400 Purchased Property Services
430 Repairs and Maintenance Services 19,025.87
440 Rentals 1,642.98

Total Purchased Property Services \$20,668.85

500 Other Purchased Services
530 Communications 36,819.22
541 Advertising Related to Federal Grant Awards 1,062.80
580 Travel 5,227.75

Total Other Purchased Services \$43,109.77

600 Supplies
610 General Supplies 4,447.76
650 Supplies & Fees – Technology Related 156,346.25

Total Supplies \$160,794.01

700 Property
790 Other Property 20,957.74

Total Property \$20,957.74

800 Other Objects
810 Dues and Fees 2,510.50
890 Miscellaneous Expenditures (259.90)

Total Other Objects \$2,250.60

Total 2800 Support Services – Central \$1,403,720.60

General Fund (10)

2810 Planning, Research, Development and Evaluation Services

Elementary

Secondary

Federal

Total

100 Personnel Services – Salaries

100 Personnel Services – Salaries 426,960.24

Total Personnel Services – Salaries \$426,960.24

200 Personnel Services – Employee Benefits

210 Group Insurance – Contracted Provider 135,422.73

220 Social Security Contributions 31,595.66

230 PSERS Retirement Contributions 127,876.57

260 Workers' Compensation 3,118.97

270 Group Insurance – Self-Insurance 12,933.91

299 All Other Employee Benefits 4,007.78

Total Personnel Services – Employee Benefits \$314,955.62

300 Purchased Professional and Technical Services

340 Technical Services 52,627.41

Total Purchased Professional and Technical Services \$52,627.41

400 Purchased Property Services

430 Repairs and Maintenance Services 19,025.87

440 Rentals 1,642.98

Total Purchased Property Services \$20,668.85

500 Other Purchased Services

530 Communications 36,819.22

580 Travel 3,295.74

Total Other Purchased Services \$40,114.96

600 Supplies

610 General Supplies 3,870.99

650 Supplies & Fees – Technology Related 156,346.25

Total Supplies \$160,217.24

700 Property

790 Other Property 20,957.74

Total Property \$20,957.74

Total 2810 Planning, Research, Development and Evaluation Services \$1,036,502.06

General Fund (10)

2830 Staff Services

	<u>Elementary</u>	<u>Secondary</u>	<u>Federal</u>	<u>Total</u>
--	-------------------	------------------	----------------	--------------

100 Personnel Services – Salaries				
100 Personnel Services – Salaries				175,197.64
Total Personnel Services – Salaries				\$175,197.64
200 Personnel Services – Employee Benefits				
210 Group Insurance – Contracted Provider				60,227.96
220 Social Security Contributions				12,886.89
230 PSERS Retirement Contributions				52,483.43
240 Tuition Reimbursement				20,358.00
260 Workers' Compensation				1,433.60
270 Group Insurance – Self-Insurance				3,876.59
299 All Other Employee Benefits				3,000.00
Total Personnel Services – Employee Benefits				\$154,266.47
300 Purchased Professional and Technical Services				
324 Professional Educational Services – Employee Training and Development Services				14,597.90
329 Professional Educational Services – Other				16,947.35
330 Other Professional Services				387.00
Total Purchased Professional and Technical Services				\$31,932.25
500 Other Purchased Services				
541 Advertising Related to Federal Grant Awards				1,062.80
580 Travel				1,932.01
Total Other Purchased Services				\$2,994.81
600 Supplies				
610 General Supplies				576.77
Total Supplies				\$576.77
800 Other Objects				
810 Dues and Fees				2,510.50
890 Miscellaneous Expenditures				(259.90)
Total Other Objects				\$2,250.60
Total 2830 Staff Services				\$367,218.54

General Fund (10)

2831 Supervision of Staff Services

Elementary Secondary Federal Total

100 Personnel Services – Salaries

100 Personnel Services – Salaries 175,197.64

Total Personnel Services – Salaries \$175,197.64

200 Personnel Services – Employee Benefits

210 Group Insurance – Contracted Provider 60,227.96

220 Social Security Contributions 12,886.89

230 PSERS Retirement Contributions 52,483.43

260 Workers' Compensation 1,433.60

270 Group Insurance – Self-Insurance 3,876.59

299 All Other Employee Benefits 3,000.00

Total Personnel Services – Employee Benefits \$133,908.47

300 Purchased Professional and Technical Services

329 Professional Educational Services – Other 16,947.35

Total Purchased Professional and Technical Services \$16,947.35

500 Other Purchased Services

541 Advertising Related to Federal Grant Awards 1,062.80

580 Travel (95.93)

Total Other Purchased Services \$966.87

600 Supplies

610 General Supplies 576.77

Total Supplies \$576.77

800 Other Objects

810 Dues and Fees 2,510.50

890 Miscellaneous Expenditures (259.90)

Total Other Objects \$2,250.60

Total 2831 Supervision of Staff Services \$329,847.70

General Fund (10)

	<u>Elementary</u>	<u>Secondary</u>	<u>Federal</u>	<u>Total</u>
2834 Staff Development Services – Non-Instructional, Certified Staff Only				
200 Personnel Services – Employee Benefits				
240 Tuition Reimbursement				20,358.00
Total Personnel Services – Employee Benefits				\$20,358.00
300 Purchased Professional and Technical Services				
324 Professional Educational Services – Employee Training and Development Services				7,935.50
Total Purchased Professional and Technical Services				\$7,935.50
500 Other Purchased Services				
580 Travel				1,353.03
Total Other Purchased Services				\$1,353.03
Total 2834 Staff Development Services – Non-Instructional, Certified Staff Only				\$29,646.53

LEA : 114062003 Exeter Township SD

Printed 12/1/2017 12:42:17 PM

General Fund (10)

2835 Health Services

Elementary

Secondary

Federal

Total

300 Purchased Professional and Technical Services

330 Other Professional Services

387.00

Total Purchased Professional and Technical Services

\$387.00

Total 2835 Health Services

\$387.00

General Fund (10)

	<u>Elementary</u>	<u>Secondary</u>	<u>Federal</u>	<u>Total</u>
2836 Staff Development Services – Non-Instructional, Non-Certified Staff Only				
300 <u>Purchased Professional and Technical Services</u>				
324 Professional Educational Services – Employee Training and Development Services				6,662.40
Total Purchased Professional and Technical Services				\$6,662.40
500 <u>Other Purchased Services</u>				
580 Travel				674.91
Total Other Purchased Services				\$674.91
Total 2836 Staff Development Services – Non-Instructional, Non-Certified Staff Only				\$7,337.31

General Fund (10)

2900 Other Support Services

Elementary

Secondary

Federal

Total

500 Other Purchased Services

595 IU Payments By Withholding

48,888.94

Total Other Purchased Services

\$48,888.94

Total 2900 Other Support Services

\$48,888.94

General Fund (10)

2910 Support Services Not Listed Elsewhere In the 2000 Series

Elementary

Secondary

Federal

Total

500 Other Purchased Services

595 IU Payments By Withholding

48,888.94

Total Other Purchased Services

\$48,888.94

Total 2910 Support Services Not Listed Elsewhere In the 2000 Series

\$48,888.94

General Fund (10)

3000 Operation of Non-Instructional Services

Total

100 Personnel Services – Salaries

100 Personnel Services – Salaries 766,498.29

Total Personnel Services – Salaries \$766,498.29

200 Personnel Services – Employee Benefits

210 Group Insurance – Contracted Provider 47,240.36

220 Social Security Contributions 61,826.63

230 PSERS Retirement Contributions 213,801.70

250 Unemployment Compensation 2,151.21

260 Workers’ Compensation 5,348.57

270 Group Insurance – Self-Insurance 5,956.04

299 All Other Employee Benefits 4,613.38

Total Personnel Services – Employee Benefits \$340,937.89

300 Purchased Professional and Technical Services

330 Other Professional Services 25,391.07

340 Technical Services 2,437.50

350 Security / Safety Services 2,411.50

390 Other Purchased Professional and Technical Services 44,879.30

Total Purchased Professional and Technical Services \$75,119.37

400 Purchased Property Services

410 Cleaning Services 10,926.84

430 Repairs and Maintenance Services 975.00

440 Rentals 580.32

Total Purchased Property Services \$12,482.16

500 Other Purchased Services

510 Student Transportation Services 15,553.17

520 Insurance – General 24,000.00

530 Communications 2,459.79

580 Travel 11,663.49

591 Services Purchased Locally 3,725.00

Total Other Purchased Services \$57,401.45

600 Supplies

610 General Supplies 76,587.38

620 Energy 23,545.25

630 Food 1,474.66

Total Supplies \$101,607.29

700 Property

752 Capital Equipment – Original and Additional 70,191.00

762 Capitalized Equipment - Replacement 6,816.00

Total Property \$77,007.00

800 Other Objects

810 Dues and Fees 32,040.51

LEA : 114062003 Exeter Township SD

Printed 12/1/2017 12:42:20 PM

General Fund (10)

3000 Operation of Non-Instructional Services

Total

800 Other Objects

890 Miscellaneous Expenditures

2,049.73

Total Other Objects

\$34,090.24

Total 3000 Operation of Non-Instructional Services

\$1,465,143.69

General Fund (10)

3200 Student Activities

Elementary Secondary Federal Total

100	<u>Personnel Services – Salaries</u>				
	100 Personnel Services – Salaries				766,498.29
Total Personnel Services – Salaries					\$766,498.29
200	<u>Personnel Services – Employee Benefits</u>				
	210 Group Insurance – Contracted Provider				47,240.36
	220 Social Security Contributions				61,826.63
	230 PSERS Retirement Contributions				213,801.70
	250 Unemployment Compensation				2,151.21
	260 Workers' Compensation				5,348.57
	270 Group Insurance – Self-Insurance				5,956.04
	299 All Other Employee Benefits				4,613.38
Total Personnel Services – Employee Benefits					\$340,937.89
300	<u>Purchased Professional and Technical Services</u>				
	330 Other Professional Services				25,391.07
	340 Technical Services				2,437.50
	350 Security / Safety Services				2,411.50
	390 Other Purchased Professional and Technical Services				44,879.30
Total Purchased Professional and Technical Services					\$75,119.37
400	<u>Purchased Property Services</u>				
	410 Cleaning Services				10,926.84
	430 Repairs and Maintenance Services				975.00
	440 Rentals				580.32
Total Purchased Property Services					\$12,482.16
500	<u>Other Purchased Services</u>				
	510 Student Transportation Services				15,553.17
	520 Insurance – General				24,000.00
	530 Communications				2,459.79
	580 Travel				11,663.49
Total Other Purchased Services					\$53,676.45
600	<u>Supplies</u>				
	610 General Supplies				76,539.38
	620 Energy				23,545.25
	630 Food			181.77	181.77
Total Supplies					\$181.77 \$100,266.40
700	<u>Property</u>				
	752 Capital Equipment – Original and Additional				70,191.00
	762 Capitalized Equipment - Replacement				6,816.00
Total Property					\$77,007.00
800	<u>Other Objects</u>				
	810 Dues and Fees				32,040.51
	890 Miscellaneous Expenditures				2,049.73

LEA : 114062003 Exeter Township SD

Printed 12/1/2017 12:42:20 PM

General Fund (10)

3200 Student Activities

Elementary

Secondary

Federal

Total

Total Other Objects

\$34,090.24

Total 3200 Student Activities

\$181.77

\$1,460,077.80

LEA : 114062003 Exeter Township SD

Printed 12/1/2017 12:42:20 PM

General Fund (10)

3300 Community Services

Elementary

Secondary

Federal

Total

500 Other Purchased Services

591 Services Purchased Locally

3,725.00

Total Other Purchased Services

\$3,725.00

600 Supplies

610 General Supplies

48.00

630 Food

811.34

1,292.89

Total Supplies

\$811.34

\$1,340.89

Total 3300 Community Services

\$811.34

\$5,065.89

General Fund (10)

4000 Facilities Acquisition, Construction and Improvement Services

Total

400 Purchased Property Services

430 Repairs and Maintenance Services

3,120.00

Total Purchased Property Services

\$3,120.00

700 Property

752 Capital Equipment – Original and Additional

16,100.00

762 Capitalized Equipment - Replacement

96,091.05

780 Infrastructure Assets

10,155.97

Total Property

\$122,347.02

Total 4000 Facilities Acquisition, Construction and Improvement Services

\$125,467.02

LEA : 114062003 Exeter Township SD

Printed 12/1/2017 12:42:21 PM

General Fund (10)

	<u>Elementary</u>	<u>Secondary</u>	<u>Federal</u>	<u>Total</u>
4600 Existing Building Improvement Services				
400 <u>Purchased Property Services</u>				
430 Repairs and Maintenance Services				3,120.00
Total Purchased Property Services				\$3,120.00
700 <u>Property</u>				
752 Capital Equipment – Original and Additional				16,100.00
762 Capitalized Equipment - Replacement				96,091.05
780 Infrastructure Assets				10,155.97
Total Property				\$122,347.02
Total 4600 Existing Building Improvement Services				\$125,467.02

General Fund (10)

5000 Other Expenditures and Financing Uses

Total

800 Other Objects

830 Interest	4,955,381.98
880 Refunds of Prior Years' Receipts	286,044.94

Total Other Objects	\$5,241,426.92
----------------------------	-----------------------

900 Other Uses of Funds

910 Redemption of Principal	3,840,976.99
930 Fund Transfers	1,760.76
932 Capital Reserve Fund Transfers Applicable To Fund 32	1,500,000.00

Total Other Uses of Funds	\$5,342,737.75
----------------------------------	-----------------------

Total 5000 Other Expenditures and Financing Uses	\$10,584,164.67
---	------------------------

LEA : 114062003 Exeter Township SD

Printed 12/1/2017 12:42:23 PM

General Fund (10)

5100 Debt Service / Other Expenditures and Financing Uses	<u>Elementary</u>	<u>Secondary</u>	<u>Federal</u>	<u>Total</u>
800 Other Objects				
830 Interest				4,955,381.98
880 Refunds of Prior Years' Receipts				286,044.94
Total Other Objects				\$5,241,426.92
900 Other Uses of Funds				
910 Redemption of Principal				3,840,976.99
Total Other Uses of Funds				\$3,840,976.99
Total 5100 Debt Service / Other Expenditures and Financing Uses				\$9,082,403.91

LEA : 114062003 Exeter Township SD

Printed 12/1/2017 12:42:23 PM

General Fund (10)

	<u>Elementary</u>	<u>Secondary</u>	<u>Federal</u>	<u>Total</u>
5110 Debt Service				
800 Other Objects				
830 Interest				4,955,381.98
Total Other Objects				\$4,955,381.98
900 Other Uses of Funds				
910 Redemption of Principal				3,840,976.99
Total Other Uses of Funds				\$3,840,976.99
Total 5110 Debt Service				\$8,796,358.97

LEA : 114062003 Exeter Township SD

Printed 12/1/2017 12:42:23 PM

General Fund (10)

	<u>Elementary</u>	<u>Secondary</u>	<u>Federal</u>	<u>Total</u>
5130 Refund of Prior Year Revenues / Receipts				
800 <u>Other Objects</u>				
880 Refunds of Prior Years' Receipts				286,044.94
Total Other Objects				\$286,044.94
Total 5130 Refund of Prior Year Revenues / Receipts				\$286,044.94

LEA : 114062003 Exeter Township SD

Printed 12/1/2017 12:42:23 PM

General Fund (10)

5200 Interfund Transfers – Out

Elementary

Secondary

Federal

Total

900 Other Uses of Funds

930 Fund Transfers

1,760.76

932 Capital Reserve Fund Transfers Applicable To Fund 32

1,500,000.00

Total Other Uses of Funds

\$1,501,760.76

Total 5200 Interfund Transfers – Out

\$1,501,760.76

LEA : 114062003 Exeter Township SD

Printed 12/1/2017 12:42:23 PM

General Fund (10)

5230 Capital Projects Fund Transfers

Elementary

Secondary

Federal

Total

900 Other Uses of Funds

932 Capital Reserve Fund Transfers Applicable To Fund 32

1,500,000.00

Total Other Uses of Funds

\$1,500,000.00

Total 5230 Capital Projects Fund Transfers

\$1,500,000.00

LEA : 114062003 Exeter Township SD

Printed 12/1/2017 12:42:23 PM

General Fund (10)

	<u>Elementary</u>	<u>Secondary</u>	<u>Federal</u>	<u>Total</u>
5250 Enterprise Fund Transfers				
900 Other Uses of Funds				
930 Fund Transfers				1,760.76
Total Other Uses of Funds				\$1,760.76
Total 5250 Enterprise Fund Transfers				\$1,760.76

LEA : 114062003 Exeter Township SD

Printed 12/1/2017 12:42:22 PM

Capital Reserve Fund - § 1431 (32)

4000 Facilities Acquisition, Construction and Improvement Services

Total

700 Property

762 Capitalized Equipment - Replacement

270,892.00

Total Property

\$270,892.00

Total 4000 Facilities Acquisition, Construction and Improvement Services

\$270,892.00

LEA : 114062003 Exeter Township SD

Printed 12/1/2017 12:42:22 PM

Capital Reserve Fund - § 1431 (32)

4600 Existing Building Improvement Services

Elementary

Secondary

Federal

Total

700 Property

762 Capitalized Equipment - Replacement

270,892.00

Total Property

\$270,892.00

Total 4600 Existing Building Improvement Services

\$270,892.00

	<u>General Fund(10)</u>	<u>Public Purpose Trust(27)</u>	<u>Other Compt Approved (28)</u>	<u>Athletic / Activity(29)</u>	<u>Capital Reserve (690. 1850)(31)</u>
1000 Instruction					
1100 Regular Programs - Elementary / Secondary	28,443,246.78				
1200 Special Programs - Elementary / Secondary	10,348,920.54				
1300 Vocational Education	1,532,890.33				
1400 Other Instructional Programs - Elementary / Secondary	54,085.69				
Total Instruction	\$40,379,143.34				
2000 Support Services					
2100 Support Services - Students	2,165,252.19				
2200 Support Services - Instructional Staff	2,426,414.59				
2300 Support Services - Administration	3,452,172.33				
2400 Support Services - Pupil Health	536,998.44				
2500 Support Services - Business	596,500.60				
2600 Operation and Maintenance of Plant Services	5,038,514.28				
2700 Student Transportation Services	2,715,836.96				
2800 Support Services - Central	1,403,720.60				
2900 Other Support Services	48,888.94				
Total Support Services	\$18,384,298.93				
3000 Operation of Non-Instructional Services					
3200 Student Activities	1,460,077.80				
3300 Community Services	5,065.89				
Total Operation of Non-Instructional Services	\$1,465,143.69				
4000 Facilities Acquisition, Construction and Improvement Services					
4600 Existing Building Improvement Services	125,467.02				
Total Facilities Acquisition, Construction and Improvement Services	\$125,467.02				
5000 Other Expenditures and Financing Uses					
5100 Debt Service / Other Expenditures and Financing Uses	9,082,403.91				
5200 Interfund Transfers - Out	1,501,760.76				
Total Other Expenditures and Financing Uses	\$10,584,164.67				
TOTAL ACTUAL EXPENDITURES & OTHER FINANCING USES	\$70,938,217.65				

LEA : 114062003 Exeter Township SD

Printed 12/1/2017 12:42:26 PM

	<u>Capital Reserve (1431)(32)</u>	<u>Other Capital Projects Fund(39)</u>	<u>Debt Service(40)</u>	<u>Permanent(90)</u>	<u>Total</u>
1000 Instruction					
1100 Regular Programs - Elementary / Secondary					28,443,246.78
1200 Special Programs - Elementary / Secondary					10,348,920.54
1300 Vocational Education					1,532,890.33
1400 Other Instructional Programs - Elementary / Secondary					54,085.69
Total Instruction					\$40,379,143.34
2000 Support Services					
2100 Support Services - Students					2,165,252.19
2200 Support Services - Instructional Staff					2,426,414.59
2300 Support Services - Administration					3,452,172.33
2400 Support Services - Pupil Health					536,998.44
2500 Support Services - Business					596,500.60
2600 Operation and Maintenance of Plant Services					5,038,514.28
2700 Student Transportation Services					2,715,836.96
2800 Support Services - Central					1,403,720.60
2900 Other Support Services					48,888.94
Total Support Services					\$18,384,298.93
3000 Operation of Non-Instructional Services					
3200 Student Activities					1,460,077.80
3300 Community Services					5,065.89
Total Operation of Non-Instructional Services					\$1,465,143.69
4000 Facilities Acquisition, Construction and Improvement Services					
4600 Existing Building Improvement Services		270,892.00			396,359.02
Total Facilities Acquisition, Construction and Improvement Services		\$270,892.00			\$396,359.02
5000 Other Expenditures and Financing Uses					
5100 Debt Service / Other Expenditures and Financing Uses					9,082,403.91
5200 Interfund Transfers - Out					1,501,760.76
Total Other Expenditures and Financing Uses					\$10,584,164.67
TOTAL ACTUAL EXPENDITURES & OTHER FINANCING USES		\$270,892.00			\$71,209,109.65

LEA : 114062003 Exeter Township SD

Printed 12/1/2017 12:42:33 PM

PSERS Salary Data (Salary Data should relate to the General Fund only)

Amount Description	Amount
Total Salary Base for salaries subject to PSERS withholding	29,578,104.18
Total Federally Funded salaries subject to PSERS withholding	1,049,172.14
	<hr/>

Title I Expenditure Data

Amount Description	Amount
Expenditures Funded with Current Title I Funds	460,593.97
Expenditures Funded with Carry over Title I Funds	6,279.68
	<hr/>
Total Title I Expenditure Data	\$466,873.65
	<hr/>

Title I ARRA Amount

Amount Description	Amount
Portion of Total Title I Expenditures funded with ARRA Title I	<hr/>

Benefits for Staff Relative to Collective Bargaining Agreements

	OBJECT	COVERED	NOT COVERED	TOTAL
10 General Fund				
	211 Medical Insurance	6,337,863.97	511,801.37	6,849,665.34
	212 Dental Insurance			
	215 Eye Care Insurance	14,334.74	1,709.37	16,044.11
	216 Prescription Insurance			
	271 Self-Insurance Medical Benefits			
	272 Self-Insurance Dental Benefits	337,030.18	27,380.00	364,410.18
	275 Self-Insurance Eye Care Benefits			
	276 Self-Insurance Prescription Benefits			
	FUND TOTAL	\$6,689,228.89	\$540,890.74	\$7,230,119.63
50 Enterprise Fund				
	211 Medical Insurance	92,724.45	19,057.04	111,781.49
	212 Dental Insurance			
	215 Eye Care Insurance		79.08	79.08
	216 Prescription Insurance			
	271 Self-Insurance Medical Benefits			
	272 Self-Insurance Dental Benefits	4,666.97	888.00	5,554.97
	275 Self-Insurance Eye Care Benefits			
	276 Self-Insurance Prescription Benefits			
	FUND TOTAL	\$97,391.42	\$20,024.12	\$117,415.54
60 Internal Service Fund	No Self Insurance data to report			
	211 Medical Insurance			
	212 Dental Insurance			
	215 Eye Care Insurance			
	216 Prescription Insurance			
	271 Self-Insurance Medical Benefits			
	272 Self-Insurance Dental Benefits			
	275 Self-Insurance Eye Care Benefits			
	276 Self-Insurance Prescription Benefits			
	FUND TOTAL			
Total of All Funds		\$6,786,620.31	\$560,914.86	\$7,347,535.17

LEA : 114062003 Exeter Township SD

Printed 12/1/2017 12:42:34 PM

Function	Special Education (Prior Year)	Nonspecial Education (Prior Year)	Total (Prior Year)	Special Education (Current Year)	Nonspecial Education (Current Year)	Total (Current Year)
2120 Guidance Services	252,652.90	1,205,266.71	1,457,919.61	281,769.25	1,289,094.30	1,570,863.55
2140 Psychological Services	585,313.59		585,313.59	562,133.46		562,133.46
2150 Speech Pathology and Audiology Services						
2160 Social Work Services	11,074.50		11,074.50			
2260 Instruction and Curriculum Development Services	632,697.84		632,697.84	688,910.25		688,910.25
2350 Legal and Accounting Services	163,102.75	76,360.38	239,463.13	15,855.00	106,369.40	122,224.40
2420 Medical Services						
2440 Nursing Services	106,413.67	506,940.55	613,354.22	96,322.59	440,675.85	536,998.44
2700 Student Transportation Services	568,329.82	2,202,104.63	2,770,434.45	562,767.23	2,153,069.73	2,715,836.96
Total	\$2,319,585.07	\$3,990,672.27	\$6,310,257.34	\$2,207,757.78	\$3,989,209.28	\$6,196,967.06

(PRINCIPAL AMOUNTS ONLY)

GOVERNMENTAL FUNDS/ ACTIVITIES

	Short-Term Borrowing	General Obligation Bonds/Notes	Authority Building Obligations	Other Long-Term Debt	Other Post-Employment Benefits (OPEB)	Compensated Absences	Net Pension Liability	Total
1. Debt at Beginning of Fiscal Year		76,243,326.00			647,981.00	1,910,361.00	96,940,000.00	175,741,668.00
2. Additional Debt Incurred During Year				352,276.00	210,943.00	61,046.00	15,666,000.00	16,290,265.00
3. Retirements and Repayments		3,747,744.00		93,232.99				3,840,976.99
4. Debt at End of Fiscal Year		72,495,582.00		259,043.01	858,924.00	1,971,407.00	112,606,000.00	188,190,956.01
5. Accreted Interest at End Of Fiscal Year		5,947,418.00						5,947,418.00
6. Total Debt and Accreted Interest		78,443,000.00		259,043.01	858,924.00	1,971,407.00	112,606,000.00	194,138,374.01
7. Current Portion P&I - Due within 1 year		9,020,235.47		94,583.00				9,114,818.47
8. Interest Paid during current fiscal year		4,954,031.98		1,350.00				4,955,381.98

(PRINCIPAL AMOUNTS ONLY)

PROPRIETARY FUNDS

	Short-Term Borrowing	General Obligation Bonds/Notes	Authority Building Obligations	Other Long-Term Debt	Other Post-Employment Benefits (OPEB)	Compensated Absences	Net Pension Liability	Total
1. Debt at Beginning of Fiscal Year						134,609.00	2,165,000.00	2,299,609.00
2. Additional Debt Incurred During Year							350,000.00	350,000.00
3. Retirements and Repayments						871.00		871.00
4. Debt at End of Fiscal Year						133,738.00	2,515,000.00	2,648,738.00
5. Accreted Interest at End Of Fiscal Year								
6. Total Debt and Accreted Interest						133,738.00	2,515,000.00	2,648,738.00
7. Current Portion P&I - Due within 1 year								
8. Interest Paid during current fiscal year								

Total Principal and Interest Payments Made by Your School - All Funds

Function	Fund		Principal (910)	Principal (920)	Interest (830)	Total (Principal +Interest)	Misc Other Uses (990)
5110	10	General Fund	3,840,976.99		4,955,381.98	8,796,358.97	
5110	20	Special Revenue Funds					
5110	30	Capital Projects Funds					
5110	40	Debt Service Fund					
5110	90	Permanent Fund					
5120	10	General Fund					
5120	20	Special Revenue Funds					
5120	30	Capital Projects Funds					
5120	40	Debt Service Fund					

Total Debt Payments - Governmental Funds			\$3,840,976.99		\$4,955,381.98	\$8,796,358.97	
---	--	--	-----------------------	--	-----------------------	-----------------------	--

Function	Fund		Principal (910)	Principal (920)	Interest (830)	Total (Principal +Interest)
5110	50	Enterprise Fund				
5110	60	Internal Service Fund				
5120	50	Enterprise Fund				
5120	60	Internal Service Fund				

Total Debt Payments - Proprietary Funds						
--	--	--	--	--	--	--

Debt Details
Governmental Funds/ Activities

Debt Category	Debt Issue Date (MM/YYYY)	Principal Amounts Only				Current Portion Due Within One Year (Principal and Interest)	Interest Paid During Fiscal Year
		Debt at Beginning of Fiscal Year	Additions	Reductions / Repayments	Debt at End of Fiscal Year		
General Obligation Bonds/Notes – CIB	01/2015	3,913,000.00		790,000.00	3,123,000.00	800,010.25	47,493.00
General Obligation Bonds/Notes – CIB	02/2015	9,240,000.00		5,000.00	9,235,000.00	209,145.00	204,232.50
General Obligation Bonds/Notes – CIB	03/2015	4,270,000.00		5,000.00	4,265,000.00	100,300.00	95,400.00
General Obligation Bonds/Notes – CIB	01/2014	9,960,000.00		420,000.00	9,540,000.00	1,102,041.26	319,391.26
General Obligation Bonds/Notes – CIB	02/2013	9,395,000.00		55,000.00	9,340,000.00	265,265.00	210,815.00
General Obligation Bonds/Notes – CIB	12/2012	25,135,000.00		425,000.00	24,710,000.00	1,308,220.20	884,990.46
General Obligation Bonds/Notes – CIB	01/2012	4,045,000.00		450,000.00	3,595,000.00	531,607.50	90,107.50
General Obligation Bonds/Notes – CIB	12/2011	7,725,000.00		690,000.00	7,035,000.00	903,646.26	209,346.26
General Obligation Bonds/Notes – CAB	10/1994	2,560,326.00		907,744.00	1,652,582.00	3,800,000.00	2,892,256.00
Other Long Term Debt/Liabilities			352,276.00	93,232.99	259,043.01	94,583.00	1,350.00
Compensated Absences		1,910,361.00	61,046.00		1,971,407.00		
Other Post-Employment Benefits (OPEB)		647,981.00	210,943.00		858,924.00		
Net Pension Liability		96,940,000.00	15,666,000.00		112,606,000.00		
Totals for Debt Entered:		\$175,741,668.00	\$16,290,265.00	\$3,840,976.99	\$188,190,956.01	\$9,114,818.47	\$4,955,381.98

Bond Details
Proprietary Funds

Debt Category	Debt Issue Date (MM/YYYY)	Principal Amounts Only				Current Portion Due Within One Year (Principal and Interest)	Interest Paid During Fiscal Year
		Debt at Beginning of Fiscal Year	Additions	Reductions / Repayments	Debt at End of Fiscal Year		
Compensated Absences		134,609.00		871.00	133,738.00		
Net Pension Liability		2,165,000.00	350,000.00		2,515,000.00		
Totals for Debt Entered:		\$2,299,609.00	\$350,000.00	\$871.00	\$2,648,738.00		

LEA : 114062003 Exeter Township SD

Printed 12/1/2017 12:42:35 PM

Accreted Interest Detail
Governmental Funds/ Activities

Debt Category	Debt Issue Date (MM/YYYY)	Beginning Accreted Interest	Additions	Reductions	Ending Accreted Interest	Ending bond Principal	Ending Principal Plus Accreted Interest
General Obligation Bonds/Notes – CAB	10/1994	8,839,674.00		2,892,256.00	5,947,418.00	1,652,582.00	7,600,000.00
Totals for Debt Entered:		\$8,839,674.00		\$2,892,256.00	\$5,947,418.00	\$1,652,582.00	\$7,600,000.00

General Fund (10)

Section 1: Tuition/Purchased Services as Reported within Expenditure Detail

	Amount
Tuition Reported in General Fund Expenditures 1000-560	3,662,834.44
Purchased Services in General Fund Expenditures 1000-594 and 1000-597	

Section 1 Total	\$3,662,834.44
------------------------	-----------------------

Section 2: Tuition Paid to Institution Types During Fiscal Year

	Tuition Paid For Nonspecial Education	Tuition Paid For Special Education	Total
1 1306 Institutions			
2 Institutionalized Children's Programs			
3 Juveniles Incarcerated in Adult Facilities			
4 Residential Treatment Facilities			
5 Other Local Education Agencies	35,871.34	53,974.26	89,845.60
6 Brick and Mortar Charter Schools	30,416.41		30,416.41
7 Cyber Charter Schools	597,384.70	353,885.59	951,270.29
8 Career and Technology Centers	1,254,385.08	82,200.72	1,336,585.80
9 Approved Private Schools	111,651.25	1,131,261.65	1,242,912.90
10 PA Chartered Schools for the Deaf and Blind			
11 Private Residential Rehabilitative Institutions		11,803.44	11,803.44
12 Juvenile Detention Centers			
13 Special Program Jointures			
14 Other Tuition Not Included Elsewhere In This Section			

Section 2 Total	\$2,029,708.78	\$1,633,125.66	\$3,662,834.44
------------------------	-----------------------	-----------------------	-----------------------

1 .	<u>Student Transportation Services for Educational Field Trips</u>	10,250.66
2 .	<u>Student Transportation Services for Student Activities</u>	82,200.33
3 .	<u>Rental of Vehicles for Student Transportation Services</u>	
4 .	<u>Capital Reserve Funds</u>	

Include only district-owned transportation expenditures paid from State or local money.
 DO NOT include federal expenditures or payments to contract service providers.
 Contracted transportation services should not be recorded on this schedule.

LEA : 114062003 Exeter Township SD

Printed 12/1/2017 12:42:37 PM

Food Service / Cafeteria Operations Fund (51)

3000 Operation of Non-Instructional Services

Total

100 Personnel Services – Salaries

100 Personnel Services – Salaries 675,131.00

Total Personnel Services – Salaries \$675,131.00

200 Personnel Services – Employee Benefits

210 Group Insurance – Contracted Provider 111,781.49

220 Social Security Contributions 50,847.63

230 PSERS Retirement Contributions 194,516.72

260 Workers’ Compensation 6,088.10

270 Group Insurance – Self-Insurance 7,622.12

291 Other Retirement Plans 12,595.94

Total Personnel Services – Employee Benefits \$383,452.00

400 Purchased Property Services

430 Repairs and Maintenance Services 46,357.00

Total Purchased Property Services \$46,357.00

500 Other Purchased Services

580 Travel 1,183.57

599 Other Miscellaneous Purchased Services 1,804.43

Total Other Purchased Services \$2,988.00

600 Supplies

610 General Supplies 42,932.24

630 Food 629,471.76

650 Supplies & Fees – Technology Related 4,965.00

Total Supplies \$677,369.00

700 Property

740 Depreciation 18,084.19

Total Property \$18,084.19

800 Other Objects

810 Dues and Fees 6,125.98

Total Other Objects \$6,125.98

Total 3000 Operation of Non-Instructional Services \$1,809,507.17

LEA : 114062003 Exeter Township SD

Printed 12/1/2017 12:42:37 PM

Food Service / Cafeteria Operations Fund (51)

	<u>Elementary</u>	<u>Secondary</u>	<u>Federal</u>	<u>Total</u>
3100 Food Services				
100 Personnel Services – Salaries				
100 Personnel Services – Salaries				675,131.00
Total Personnel Services – Salaries				\$675,131.00
200 Personnel Services – Employee Benefits				
210 Group Insurance – Contracted Provider				111,781.49
220 Social Security Contributions				50,847.63
230 PSERS Retirement Contributions				194,516.72
260 Workers' Compensation				6,088.10
270 Group Insurance – Self-Insurance				7,622.12
291 Other Retirement Plans				12,595.94
Total Personnel Services – Employee Benefits				\$383,452.00
400 Purchased Property Services				
430 Repairs and Maintenance Services				46,357.00
Total Purchased Property Services				\$46,357.00
500 Other Purchased Services				
580 Travel				1,183.57
599 Other Miscellaneous Purchased Services				1,804.43
Total Other Purchased Services				\$2,988.00
600 Supplies				
610 General Supplies				42,932.24
630 Food				629,471.76
650 Supplies & Fees – Technology Related				4,965.00
Total Supplies				\$677,369.00
700 Property				
740 Depreciation				18,084.19
Total Property				\$18,084.19
800 Other Objects				
810 Dues and Fees				6,125.98
Total Other Objects				\$6,125.98
Total 3100 Food Services				\$1,809,507.17

	<u>Food Service(51)</u>	<u>Child Care Operations(52)</u>	<u>Other Enterprise(58)</u>	<u>Internal Service(60)</u>	<u>Total</u>
3000 <u>Operation of Non-Instructional Services</u>					
3100 Food Services	1,809,507.17				1,809,507.17
Total Operation of Non-Instructional Services	\$1,809,507.17				\$1,809,507.17
TOTAL ACTUAL EXPENDITURES & OTHER FINANCING USES	\$1,809,507.17				\$1,809,507.17